



# Pennsylvania Economic Indicators

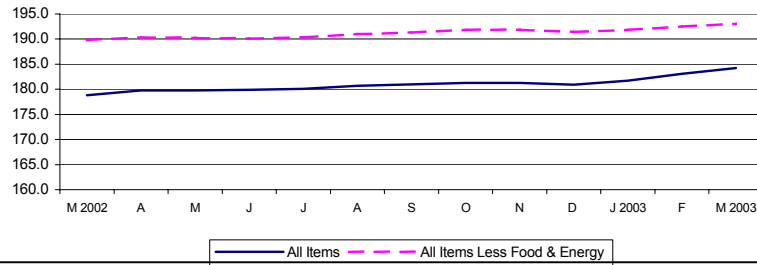
FIRST QUARTER 2003

## Consumer Price Index

The Consumer Price Index for All Urban Consumers (CPI-U) increased to 184.2 in March 2003 from 183.1 in February. This represents a 0.6 percent decrease from February 2003, and a 3.0 percent increase from March 2002. Excluding food and energy, the CPI-U (not seasonally adjusted) increased to 193.0 in March 2003. This represents a 0.3 percent increase from February 2003, and a 1.5 percent increase from March 2002.

Source: U.S. Department of Labor, Bureau of Labor Statistics.

Consumer Price Index: United States, March 2002 - March 2003  
(Not Seasonally Adjusted)

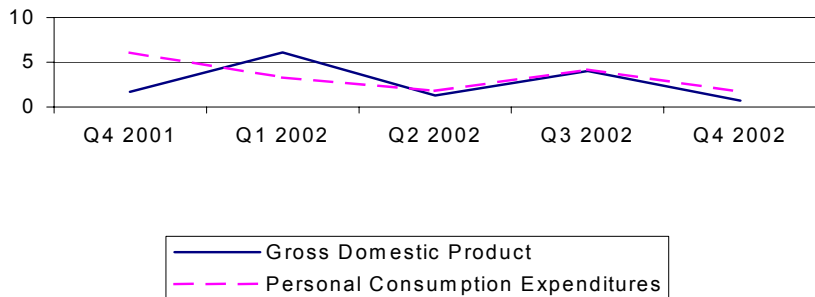


## Gross Domestic Product

Real gross domestic product (GDP) increased at an annual rate of 0.7 percent in the fourth quarter of 2002 after an increase of 4.0 percent in the third quarter of 2002, according to the national income and product accounts (NIPA's). Real personal consumption expenditures (PCE) increased 1.7 percent after increasing 4.2 percent in the fourth quarter of 2002. Durable goods purchases decreased 8.2 percent, compared to a 22.8 percent increase in the third quarter. Nondurable goods increased 5.1 percent and services increased 2.2 percent.

Source: U.S. Department of Commerce, Bureau of Economic Analysis.

Percent Change in Gross Domestic Product (Seasonally Adjusted Rates)  
United States, Fourth Quarter 2001 – Fourth Quarter 2002

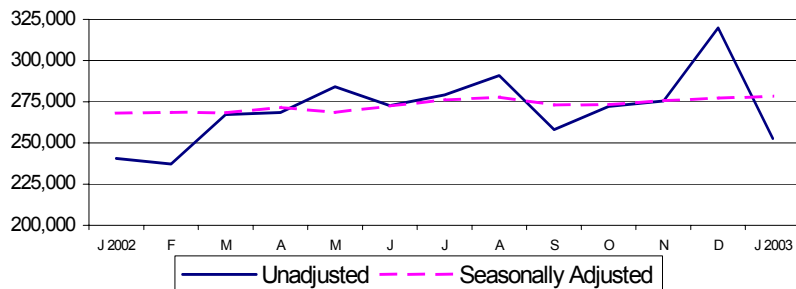


## Retail Sales

Retail sales for January 2003 of \$252,558 million represent a 21.0 percent decrease from December 2002 and a 5.9 percent increase from January 2002. On a seasonally adjusted basis, retail sales increased 0.5 percent from December 2002, and increased 3.9 percent from January 2002.

Source: U.S. Department of Commerce, Bureau of the Census.

Retail Sales - Millions of Current Dollars: United States,  
January 2002 - January 2003

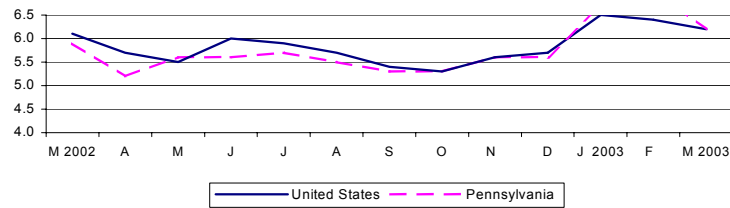


## Unemployment Rate

The national unemployment rate decreased to 6.2 percent in March 2003 from 6.4 percent in February 2003. Pennsylvania's unemployment rate decreased from 7.0 percent in February 2003 to 6.2 percent in March 2003. Pennsylvania's rate increased from a rate of 6.0 percent in March of 2002.

Source: Pennsylvania Department of Labor and Industry.

Unemployment Rate (Percent): United States and Pennsylvania  
March 2002 - March 2003 (Unadjusted)



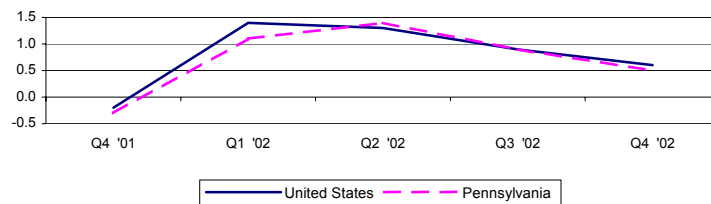
## Personal Income

Personal income increased 0.6 percent nationally in the fourth quarter of 2002 to \$8,982,839 million. Pennsylvania saw an increase of 0.5 percent to \$394,198 million. National per capita personal income stood at \$30,941 in 2002, a 1.7 percent rise from 2001. Pennsylvania, at \$31,727, showed a 3.2 percent increase and ranked 15<sup>th</sup> in the nation.

Source: U.S. Department of Commerce, Bureau of Economic Analysis.

Note: 4<sup>th</sup> Quarter 2002 is the most current data available. 2002 most current for per capita.

Percent Change in Personal Income: United States and Pennsylvania,  
Fourth Quarter 2001 - Fourth Quarter 2002

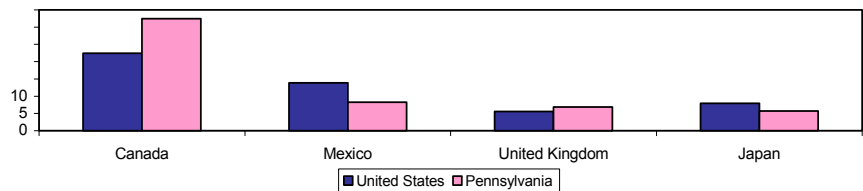


## Exports

In 2001, 16.9 percent of Pennsylvania's exports were computer and electronic products. Other top categories were non-electrical machinery (15.4 percent) and chemicals (13.9 percent). Pennsylvania ranked 11<sup>th</sup> in the nation in 2001, exporting 2.4 percent of the nation's total exports. Canada remained the top destination country for exports, receiving 22.4 percent of nation's total exports and 32.5 percent of Pennsylvania's total exports.

Source: U.S. Census Bureau, refined by Massachusetts Institute for Social and Economic Research (MISER).

Percent of Total Exports by Top Destination Countries: United States and Pennsylvania, 2001



For additional information, contact the Pennsylvania State Data Center.

Pennsylvania State Data Center  
Penn State Harrisburg  
777 West Harrisburg Pike  
Middletown, PA 17057-4898

Phone: 717.948.6336  
Fax: 717.948.6754  
Email: PaSDC-DATA@psu.edu  
URL: PaSDC.hbg.psu.edu