



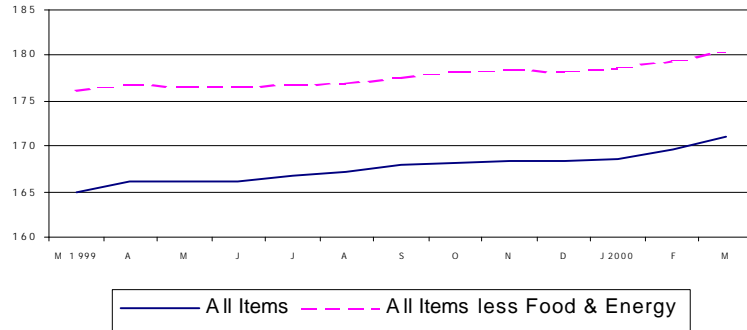
Pennsylvania Economic Indicators

First QUARTER 2000

Consumer Price Index

The Consumer Price Index for All Urban Consumer (CPI-U) rose to 171.1 in March 2000 from 169.7 the previous month. This represents a 3.7 percent increase from March 1999. On a seasonally adjusted basis, the CPI-U rose by 0.7 percent in March 2000 after increasing 0.5 percent in February. Excluding food and energy, the CPI-U rose 0.6 percent in March, following a 0.4 percent rise in February.

Source: U.S. Department of Labor, Bureau of Labor Statistics.



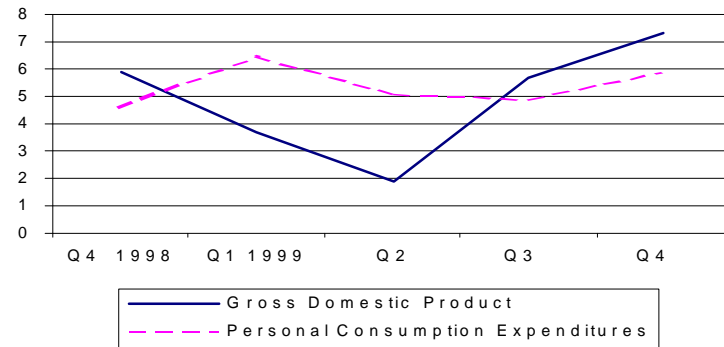
Gross Domestic Product

Real gross domestic product (GDP) increased at an annual rate of 7.3 percent in the fourth quarter of 1999, according to the national income and product accounts (NIPA's). Real personal consumption expenditures (PCE) increased 5.9 percent after increasing 4.9 percent in the third quarter 1999. Durable goods purchases increased 13.0 percent, compared to 7.7 percent in the third quarter. Nondurable goods increased 7.6 percent and services increased 3.7 percent.

Source: U.S. Department of Commerce, Bureau of Economic Analysis.

Note: 3rd Quarter 1999 is the most current data available.

Percent Change in Gross Domestic Product at Seasonally Adjusted Rates: United States, Fourth Quarter 1998 - Fourth Quarter 1999

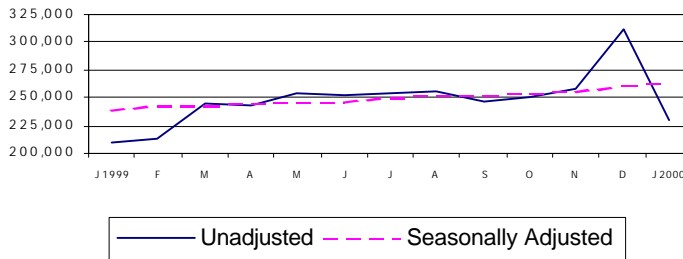


Retail Sales

Retail sales for January 2000 of \$229,715 million represent a 27 percent decrease from December 1999 and a 9.7 percent increase from January 1999. On a seasonally adjusted basis, sales increased 0.4 percent from December 1999 and 9.9 percent from January 1999.

Source: U.S. Department of Commerce, Bureau of the Census.

Retail Sales - Millions of Current Dollars: United States, January 1999 - January 2000



Consumer Price Index: United

PENNSTATE



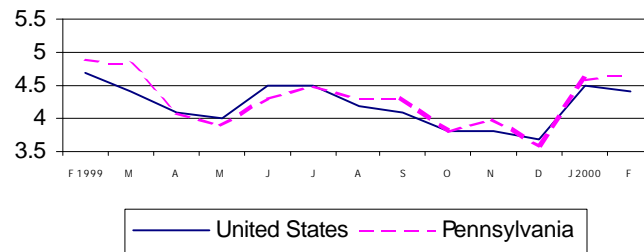
Institute of State and Regional Affairs

Unemployment Rate

The national unemployment rate decreased to 4.4 in February 2000 from 4.5 in January. Pennsylvania's unemployment rate increased to 4.7 percent from January's 4.6. This represents a decrease from the February 1999 rate of 4.9 percent.

Source: Pennsylvania Department of Labor and Industry.

United States and Pennsylvania,
February 1999 - February 2000

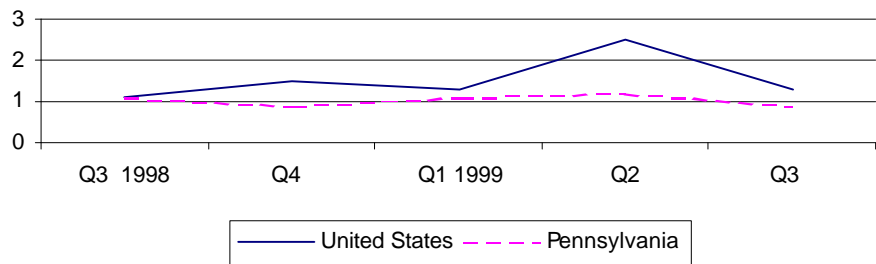


Personal Income

Personal Income rose 1.3 percent nationally in the third quarter of 1999 to \$7,601,815 million. Pennsylvania also saw an increase of 0.9 percent to \$339,062 million. National per capita personal income stood at \$26,482 in 1998, a 4.7 percent rise from 1997. Pennsylvania, at \$26,889, also showed a 4.7 percent increase and ranked 16th in the nation.

Source: U.S. Department of Commerce, Bureau of Economic Analysis.

Percent Change in Personal Income: United States and Pennsylvania,
Third Quarter 1998 - Third Quarter 1999

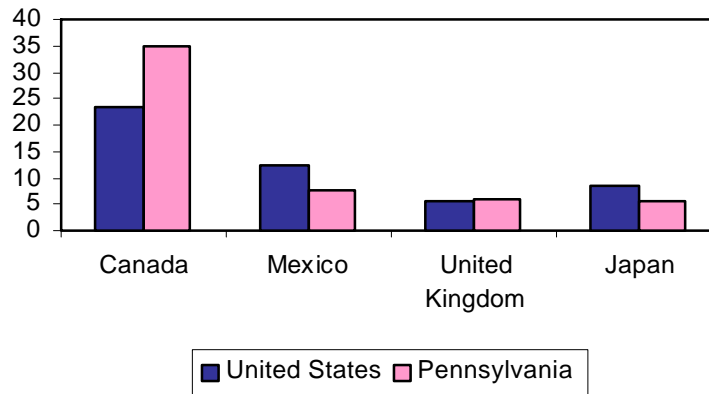


Exports

In 1999, 17 percent of Pennsylvania's exports were industrial machinery and computer equipment. Other top categories were chemicals and allied products (15 percent) and electronics and electrical equipment (15 percent). Transportation equipment was the nation's largest export at 18 percent. Canada remained the top destination country for exports receiving 24 percent of U.S. totals and 35 percent of Pennsylvania's.

Source: U.S. Census Bureau, refined by Massachusetts Institute for Social and Economic Research (MISER).

Percent of Total Exports by Top Destination Countries: United States and
Pennsylvania, 1999



For more information, contact the Pennsylvania State Data Center.

Pennsylvania State Data Center
PennState Harrisburg
777 West Harrisburg Pike
Middletown, PA 17057-4898

Phone: (717) 948-6336
Fax: (717) 948-6754
Email: PaSDC-DATA@psu.edu
URL: psdc.hbg.psu.edu/