



# Pennsylvania Economic Indicators

## 1<sup>st</sup> Quarter 1999

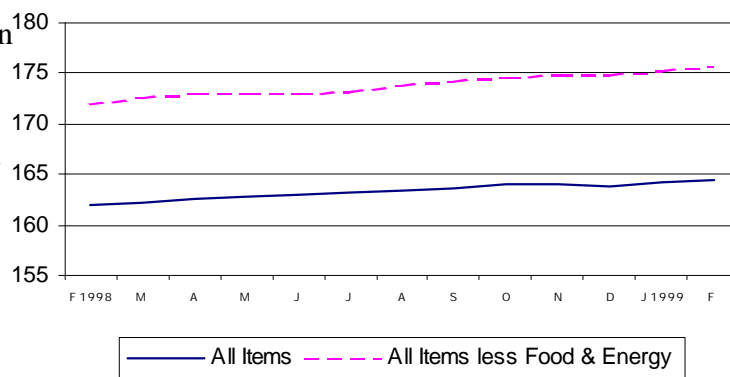
Prepared by: Pennsylvania State Data Center

### Consumer Price Index (CPI-U)

The Consumer Price Index for All Urban Consumers (CPI-U) rose slightly to 164.5 in February from 164.3 in January. This represents a 1.4 percent increase from February 1998. On a seasonally adjusted basis, the CPI-U rose 0.1 percent in February after increasing 0.1 percent in January. Excluding food and energy, the CPI-U increased 0.23 percent in February, following a 0.29 percent rise in January.

Source: U.S. Department of Labor, Bureau of Labor Statistics.

US Consumer Price Index, CPI-U (1982-84=100)

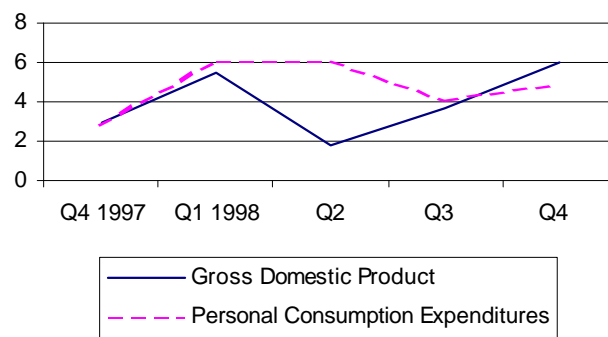


### Gross Domestic Product

Real gross domestic product (GDP) increased at an annual rate of 6.0 percent in the fourth quarter of 1998, according to the national income and product accounts (NIPA's). Real personal consumption expenditures (PCE) increased 5.0 percent in the fourth quarter after increasing 4.1 percent in the third. Durable goods purchases increased 24.5 percent, compared to 2.4 percent in the third quarter. Nondurable goods increased 4.2 percent and services increased 1.7 percent.

Source: U.S. Department of Commerce, Bureau of Economic Analysis.

Percent Change at Seasonally Adjusted Rates

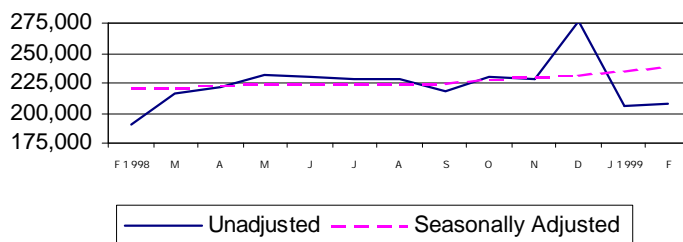


### Retail Sales

Retail sales for February 1999, \$208,214 million, represent a 1.4 percent increase from January and a 8.9 percent increase from February 1998. On a seasonally adjusted basis, sales increased 1.7 percent from January and 8.2 percent from February 1998.

Source: U.S. Department of Commerce, Bureau of the Census.

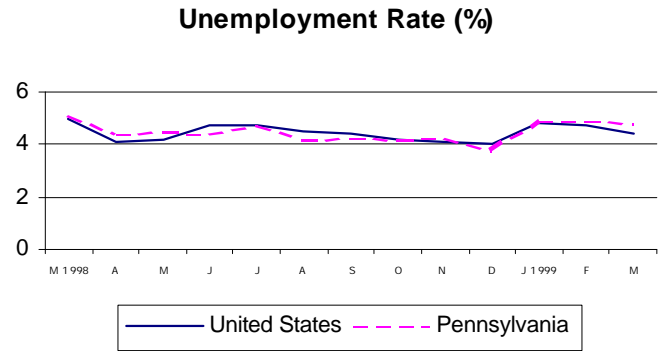
U.S Retail Sales - Millions of Current Dollars



### Unemployment Rate

The national unemployment rate decreased in March 1999 to 4.4 from 4.7 in February. Pennsylvania's unemployment rate decreased to 4.8 percent from February's 4.9. This represents a 6 percent decrease from the March 1998 rate of 5.1 percent.

Source: U.S. Department of Labor, Bureau of Labor Statistics and Pennsylvania Department of Labor and Industry.

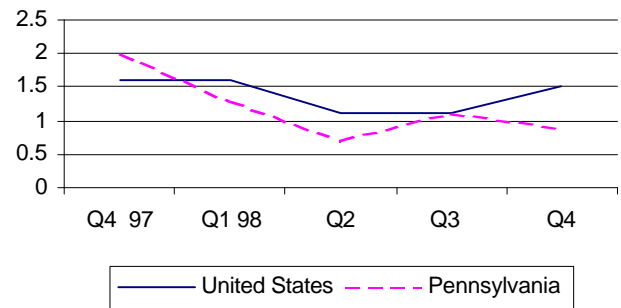


### Personal Income

Personal Income rose 1.5 percent nationally in the fourth quarter of 1998 to \$7,282,078 million. Pennsylvania also saw an increase of 0.9 percent to \$325,754 million. National per capita personal income stood at \$26,412 in 1998, a 4.4 percent change from 1997. Pennsylvania, at \$26,792, showed a 4.4 percent increase, ranking 16<sup>th</sup> in the nation.

Source: U.S. Department of Commerce, Bureau of Economic Analysis.

**Percent Change in Personal Income from Previous Quarter**

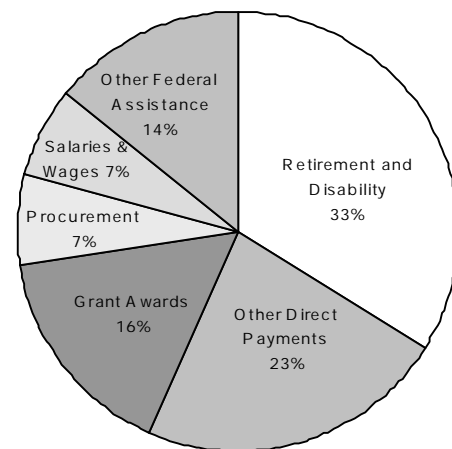


**Distribution of Federal Funds to PA, 1998**

### Federal Funding

Pennsylvania received more than \$78 billion in federal funds for fiscal year 1998. The largest percentage of Pennsylvania's federal funding, 33 percent, went toward retirement and disability payments. Other top categories consist of other direct payments, such as Medicare and unemployment benefits, (\$17.9 billion) and grant awards (\$12.4 billion).

Source: U.S. Census Bureau, Consolidated Federal Funds Report.



For more information, contact the Pennsylvania State Data Center at (717) 948-6336 , fax (717) 948-6754 or by mail at:  
 Pennsylvania State Data Center  
 777 West Harrisburg Pike  
 Middletown, PA 17057-4898