



Pennsylvania Economic Indicators

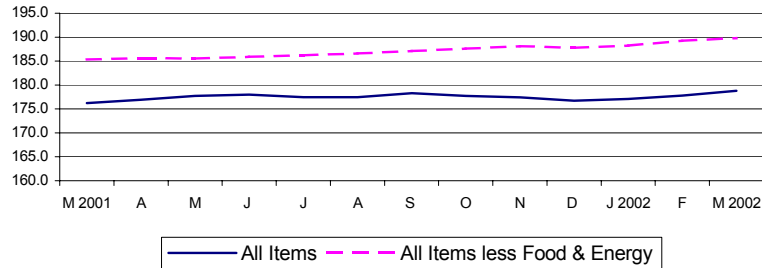
FIRST QUARTER 2002

Consumer Price Index

The Consumer Price Index for All Urban Consumers (CPI-U) increased to 178.8 in March 2002 from 177.8 in February. This represents a 0.6 percent increase from February 2002, and a 1.5 percent increase from March 2001. Excluding food and energy, the CPI-U (not seasonally adjusted) increased to 189.8 in March 2002. This represents a 0.3 percent increase from February 2002, and a 2.4 percent increase from March 2001.

Source: U.S. Department of Labor, Bureau of Labor Statistics.

States, March 2001 - March 2002
(Not Seasonally Adjusted)

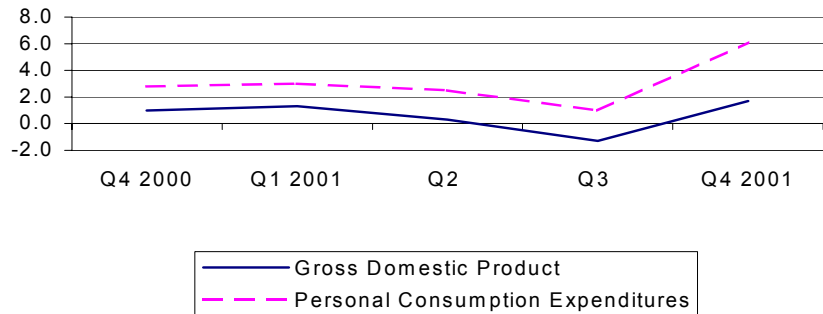


Gross Domestic Product

Real gross domestic product (GDP) increased at an annual rate of 1.7 percent in the fourth quarter of 2001 after a decrease of 1.3 percent in the third quarter of 2001, according to the national income and product accounts (NIPA's). Real personal consumption expenditures (PCE) increased 6.1 percent after increasing 1.0 percent in the third quarter 2001. Durable goods purchases increased 39.4 percent, compared to a 0.9 percent increase in the third quarter. Nondurable goods increased 2.5 percent and services increased 2.0 percent.

Source: U.S. Department of Commerce, Bureau of Economic Analysis.
Note: 4th Quarter 2001 is most current data available.

Percent Change in Gross Domestic Product (Seasonally Adjusted Rates)
United States, Fourth Quarter 2000 - Fourth Quarter 2001



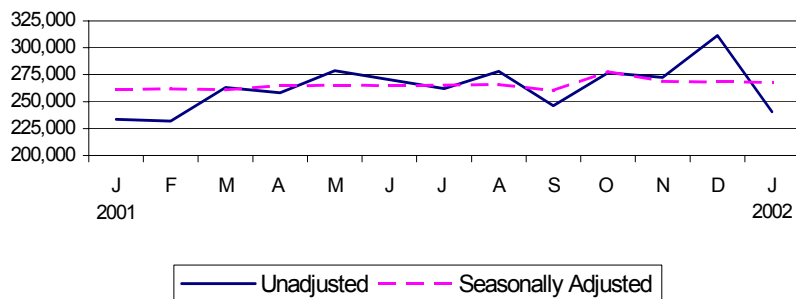
Retail Sales

Retail sales for January 2002 of \$240,592 million represent a 22.7 percent decrease from December 2001 and a 2.9 percent increase from January 2001. On a seasonally adjusted basis, retail sales decreased 0.1 percent from December 2001, and increased 2.6 percent from January 2001.

January 2002 are most recent figures and are preliminary.

Source: U.S. Department of Commerce, Bureau of the Census.

Retail Sales - Millions of Current Dollars: United States, January 2001-January 2002

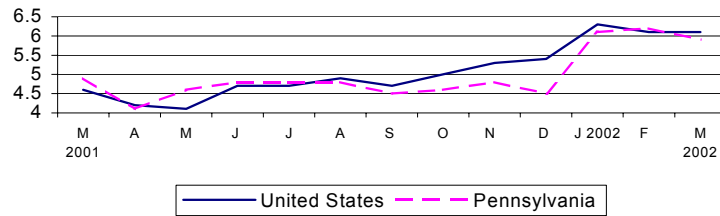


Unemployment Rate

The national unemployment rate remained steady at 6.1 percent in February and March of 2002. Pennsylvania's unemployment rate decreased from 6.2 percent in February 2002 to 5.9 percent in March 2002. Pennsylvania's rate increased from a rate of 4.8 percent in March of 2001.

Source: Pennsylvania Department of Labor and Industry.

Unemployment Rate (Percent): United States and Pennsylvania, March 2001 - March 2002 (Unadjusted)



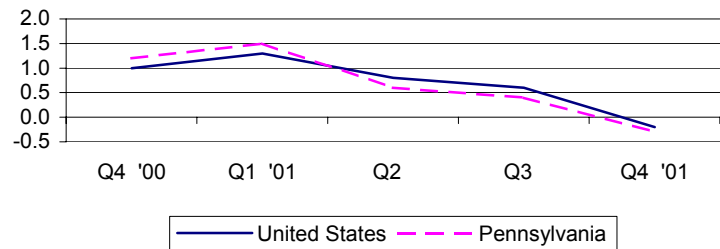
Personal Income

Personal income fell 0.2 percent nationally in the fourth quarter of 2001 to \$8,633,090 million. Pennsylvania saw a decrease of 0.3 percent to \$376,873 million. National per capita personal income stood at \$30,271 in 2001, a 2.7 percent rise from 2000. Pennsylvania, at \$30,617, showed a 3.8 percent increase and ranked 15th in the nation.

Source: U.S. Department of Commerce, Bureau of Economic Analysis.

Note: 4th Quarter 2001 is the most current data available.

Percent Change in Personal Income: United States and Pennsylvania, Fourth Quarter 2000 - Fourth Quarter 2001

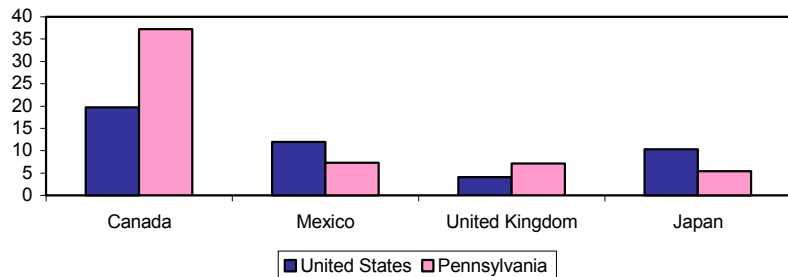


Exports

In 2000, 16.1 percent of Pennsylvania's exports were industrial machinery and computer equipment. Other top categories were electronics and electrical equipment (14.5 percent) and chemicals and allied products (13.3 percent). Pennsylvania ranked 10th in the nation in 2000 exporting 2.6 percent of the nation's total exports. Canada remained the top destination country for exports, receiving 19.7 percent of nation's total exports and 37.2 percent of Pennsylvania's total exports.

Source: U.S. Census Bureau, refined by Massachusetts Institute for Social and Economic Research (MISER).

Percent of Total Exports by Top Destination Countries: United States and Pennsylvania, 2000



For additional information, contact the Pennsylvania State Data Center.

Pennsylvania State Data Center
Penn State Harrisburg
777 West Harrisburg Pike
Middletown, PA 17057-4898

Phone: 717.948.6336
Fax: 717.948.6754
Email: PaSDC-DATA@psu.edu
URL: PaSDC.hbg.psu.edu