



Pennsylvania Economic Indicators

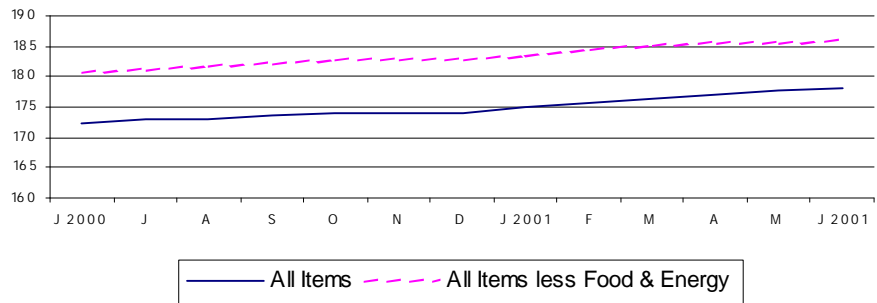
SECOND QUARTER 2001

Consumer Price Index

The Consumer Price Index for All Urban Consumers (CPI-U) increased to 178.0 in June 2001 from 177.7 in May. This represents a 3.2 percent increase from June 2000. On a seasonally adjusted basis, the CPI-U rose by 0.2 percent in June 2001 after increasing 0.4 percent in May. Excluding food and energy, the CPI-U (not seasonally adjusted) increased to 185.9 in June 2001. This represents a 2.7 percent increase from June 2000.

Source: U.S. Department of Labor, Bureau of Labor Statistics.

Consumer Price Index: United States, June 2000 - June 2001
(Not Seasonally Adjusted)



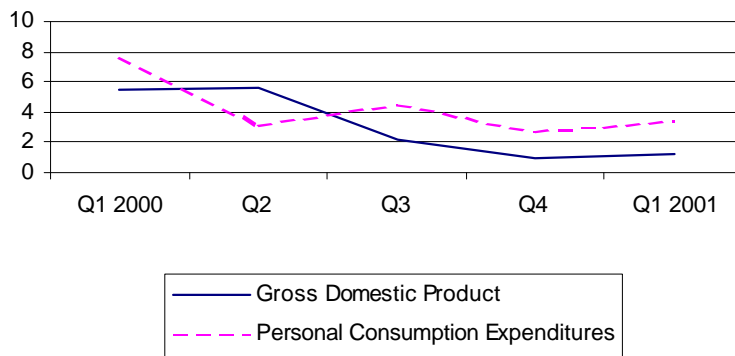
Gross Domestic Product

Real gross domestic product (GDP) increased at an annual rate of 1.2 percent in the first quarter of 2001 after a 1.0 percent increase in the fourth quarter of 2000, according to the national income and product accounts (NIPA's). Real personal consumption expenditures (PCE) increased 3.4 percent after increasing 2.8 percent in the fourth quarter 2000. Durable goods purchases increased 12.7 percent, compared to a 3.1 percent decrease in the fourth quarter. Nondurable goods increased 3.0 percent and services increased 1.8 percent.

Source: U.S. Department of Commerce, Bureau of Economic Analysis.

Note: 1st Quarter 2001 is most current data available.

Percent Change in Gross Domestic Product (Seasonally Adjusted Rates)
United States, First Quarter 2000 - First Quarter 2001



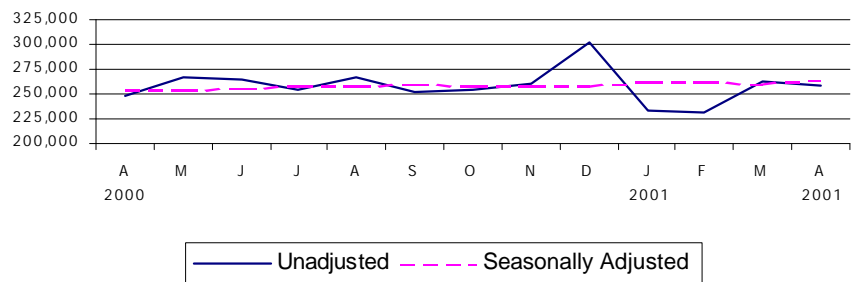
Retail Sales

Retail sales for April 2001 of \$258,246 million represent a 1.8 percent decrease from March 2001 and a 4.5 percent increase from April 2000. On a seasonally adjusted basis, retail sales increased 1.5 percent from March 2001, and 4.0 percent from April 2000.

April 2001 are most recent final figures.

Source: U.S. Department of Commerce, Bureau of the Census.

Retail Sales - Millions of Current Dollars: United States, April 2000 - April 2001

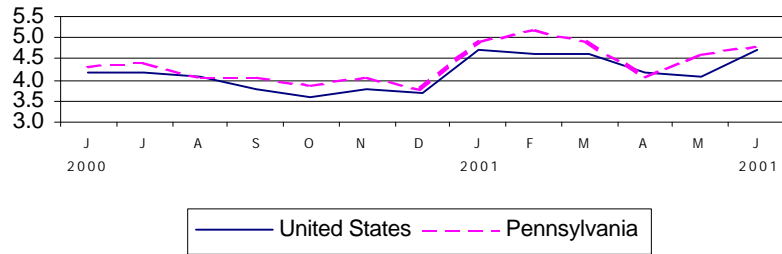


Unemployment Rate

The national unemployment rate rose from 4.1 percent in May to 4.7 percent in June of 2001. Pennsylvania's unemployment rate increased from 4.6 percent in May 2001 to 4.8 percent in June 2001. Pennsylvania's rate also increased from 4.3 percent in June of 2000.

Source: Pennsylvania Department of Labor and Industry.

Unemployment Rate (Percent): United States and Pennsylvania, June 2000 - June 2001 (Unadjusted)



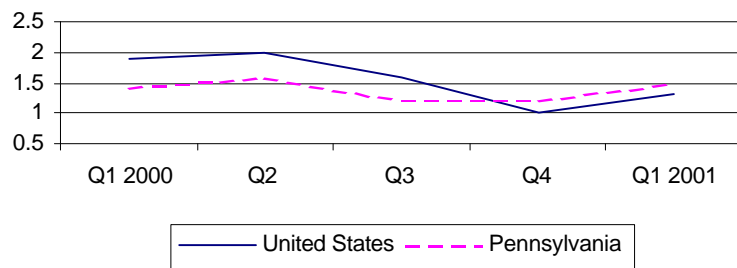
Personal Income

Personal income rose 1.3 percent nationally in the first quarter of 2001 to \$8,630,693 million. Pennsylvania saw an increase of 1.5 percent to \$375,182 million. National per capita personal income stood at \$29,676 in 2000, a 4.0 percent rise from 1999. Pennsylvania, at \$29,539, showed a 3.3 percent increase and ranked 18th in the nation.

Source: U.S. Department of Commerce, Bureau of Economic Analysis.

Note: 1st Quarter 2001 is the most current data available. 2000 most current for per capita.

Percent Change in Personal Income: United States and Pennsylvania, First Quarter 2000 - First Quarter 2001

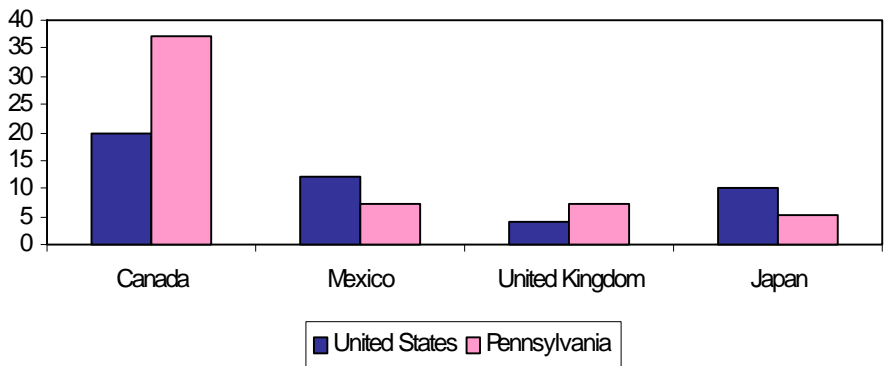


Exports

In 2000, 16.1 percent of Pennsylvania's exports were industrial machinery and computer equipment. Other top categories were electronics and electrical equipment (14.5 percent) and chemicals and allied products (13.3 percent). Pennsylvania ranked 10th in the nation in 2000 exporting 2.6 percent of the nation's total exports. Canada remained the top destination country for exports, receiving 19.7 percent of U.S. totals and 37.2 percent of Pennsylvania's.

Source: U.S. Census Bureau, refined by Massachusetts Institute for Social and Economic Research (MISER).

Percent of Total Exports by Top Destination Countries: United States and Pennsylvania, 2000



For additional information, contact the Pennsylvania State Data Center.

Pennsylvania State Data Center
Penn State Harrisburg
777 West Harrisburg Pike
Middletown, PA 17057-4898

Phone: (717) 948-6336
Fax: (717) 948-6754
Email: PaSDC-DATA@psu.edu
URL: pasdc.hbg.psu.edu