



Pennsylvania Economic Indicators

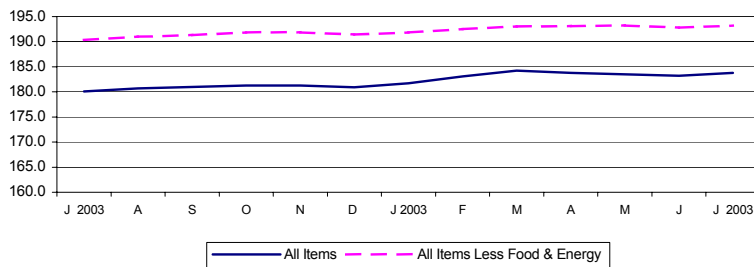
SECOND QUARTER 2003

Consumer Price Index

The Consumer Price Index for All Urban Consumers (CPI-U) increased to 183.9 in July 2003 from 183.2 in June. This represents a 0.2 percent increase from June 2003, and a 3.8 percent increase from July 2002. Excluding food and energy, the CPI-U (not seasonally adjusted) increased to 193.2 in July 2003. This represents a 0.2 percent increase from June 2003, and a 2.7 percent increase from July 2002.

Source: U.S. Department of Labor, Bureau of Labor Statistics.

Consumer Price Index: United States, July 2002 - July 2003
(Not Seasonally Adjusted)

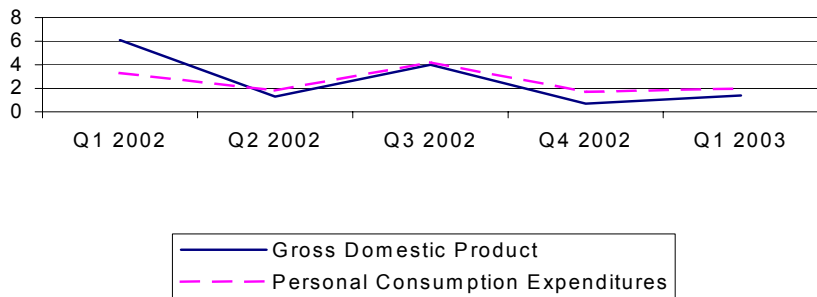


Gross Domestic Product

Real gross domestic product (GDP) increased at an annual rate of 1.4 percent in the first quarter of 2003 after an increase of 0.7 percent in the fourth quarter of 2002, according to the national income and product accounts (NIPA's). Real personal consumption expenditures (PCE) increased 2.0 percent after increasing 1.7 percent in the fourth quarter of 2002. Durable goods purchases decreased 2.0 percent, compared to an 8.2 percent decrease in the fourth quarter. Nondurable goods increased 6.1 percent and services increased 0.9 percent.

Source: U.S. Department of Commerce, Bureau of Economic Analysis.
Note: 1st Quarter 2003 is most current data available.

Percent Change in Gross Domestic Product (Seasonally Adjusted Rates)
United States, First Quarter 2002 – First Quarter 2003

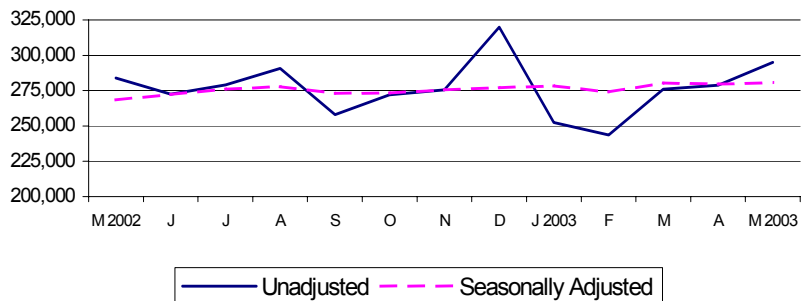


Retail Sales

Retail sales for May 2003 of \$295,032 million represent a 5.8 percent increase from April 2003 and a 3.9 percent increase from May 2002. On a seasonally adjusted basis, retail sales increased 0.3 percent from April 2003, and increased 4.5 percent from May 2002.

Source: U.S. Department of Commerce, Bureau of the Census.

Retail Sales - Millions of Current Dollars: United States,
May 2002 - May 2003

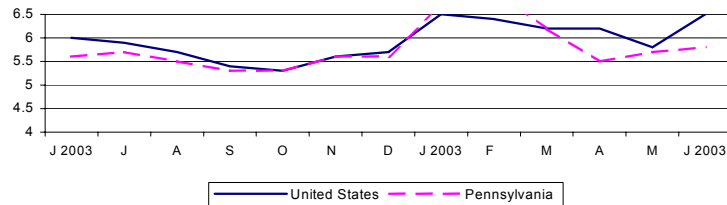


Unemployment Rate

The national unemployment rate increased to 6.5 percent in June 2003 from 5.8 percent in May 2002. Pennsylvania's unemployment rate increased from 5.7 percent in May 2003 to 5.8 percent in June 2003. Pennsylvania's rate increased from a rate of 5.6 percent in June of 2002.

Source: Pennsylvania Department of Labor and Industry.

Unemployment Rate (Percent): United States and Pennsylvania
June 2002 - June 2003 (Unadjusted)



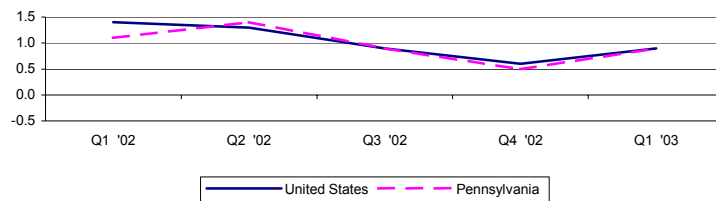
Personal Income

Personal income increased 0.9 percent nationally in the first quarter of 2003 to \$9,066,660 million. Pennsylvania saw an increase of 0.9 percent to \$397,745 million. National per capita personal income stood at \$30,941 in 2002, a 1.7 percent rise from 2001. Pennsylvania, at \$31,727, showed a 3.2 percent increase and ranked 15th in the nation.

Source: U.S. Department of Commerce, Bureau of Economic Analysis.

Note: 1st Quarter 2003 is the most current data available. 2002 most current for per capita.

Percent Change in Personal Income: United States and Pennsylvania,
First Quarter 2002 - First Quarter 2003

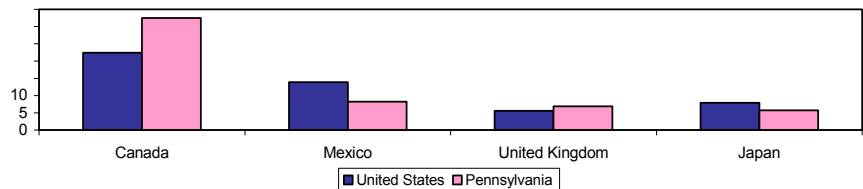


Exports

In 2001, 16.9 percent of Pennsylvania's exports were computer and electronic products. Other top categories were non-electrical machinery (15.4 percent) and chemicals (13.9 percent). Pennsylvania ranked 11th in the nation in 2001, exporting 2.4 percent of the nation's total exports. Canada remained the top destination country for exports, receiving 22.4 percent of nation's total exports and 32.5 percent of Pennsylvania's total exports.

Source: U.S. Census Bureau, refined by Massachusetts Institute for Social and Economic Research (MISER).

Percent of Total Exports by Top Destination Countries: United States and
Pennsylvania, 2001



For additional information, contact the Pennsylvania State Data Center.

Pennsylvania State Data Center
Penn State Harrisburg
777 West Harrisburg Pike
Middletown, PA 17057-4898

Phone: 717.948.6336
Fax: 717.948.6754
Email: PaSDC-DATA@psu.edu
URL: PaSDC.hbg.psu.edu