



Pennsylvania Economic Indicators

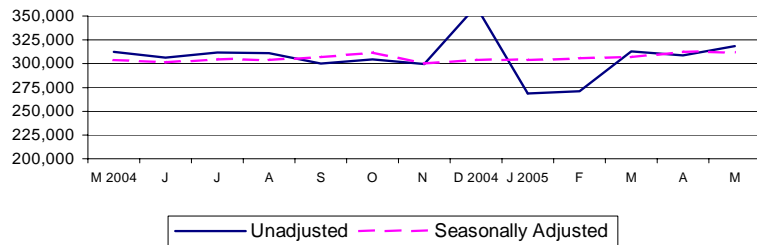
SECOND QUARTER 2005

Consumer Price Index

The Consumer Price Index for All Urban Consumers (CPI-U) increased to 194.5 in June 2005 from 194.4 in May. This represents a 0.1 percent increase from May 2005, and a 2.5 percent increase from June 2004. The 2004 Annual CPI-U for 2004 was 188.9, an increase of 2.7 percent from 2003. Excluding food and energy, the CPI-U (not seasonally adjusted) for June 2005 decreased to 200.6 from 200.8 in May. The June-to-June change was a positive 2.0 percent, however.

Source: U.S. Department of Labor, Bureau of Labor Statistics.

Consumer Price Index: United States, June 2004 - June 2005
(Not Seasonally Adjusted)

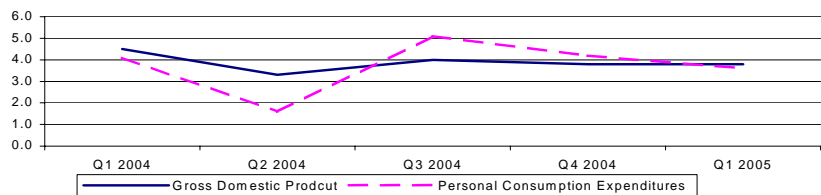


Gross Domestic Product

Real gross domestic product (GDP) increased at an annual rate of 3.8 percent in the first quarter of 2005 after a similar increase of 3.8 percent in the fourth quarter of 2004, according to the national income and product accounts (NIPA's). Real personal consumption expenditures (PCE) increased 3.6 percent after increasing 4.2 percent in the fourth quarter of 2004. Durable goods purchases increased 1.8 percent, compared to a 3.9 percent increase in the fourth quarter. Nondurable goods increased 5.5 percent and services increased 3.1 percent.

Source: U.S. Department of Commerce, Bureau of Economic Analysis.

Percent Change in Gross Domestic Product (Seasonally Adjusted Rates)
United States, First Quarter 2004 – First Quarter 2005

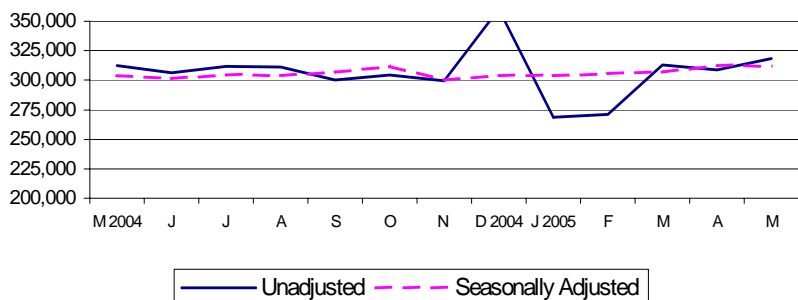


Retail Sales

Preliminary retail sales for May 2005 of \$318,528 million represent a 3.1 percent increase from April 2005 and a 6.3 percent increase from May 2004. On a seasonally adjusted basis, preliminary retail sales decreased 0.3 percent from April 2005, and increased 6.2 percent from May 2004.

Source: U.S. Department of Commerce, Bureau of the Census.

Retail Sales - Millions of Current Dollars: United States,
May 2004 - May 2005

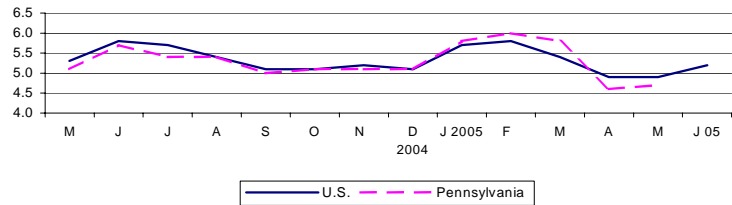


Unemployment Rate

The national unemployment increased to 5.2 percent in June 2005 from 4.9 percent in May. Pennsylvania's unemployment rate increased from 4.6 to 4.7 percent from April to June. Pennsylvania's rate decreased from a rate of 5.3 percent in May of 2004.

Source: U.S Department of Labor, Bureau of Labor Statistics

Unemployment Rate (Percent): United States and Pennsylvania
May 2004 - June 2005 (Unadjusted)

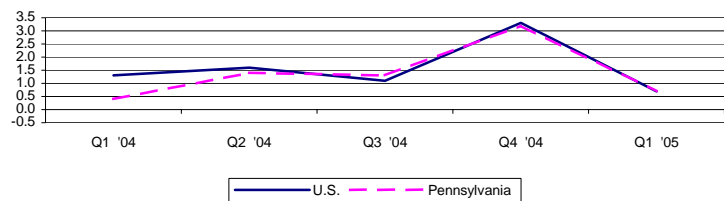


Personal Income

Personal income increased 0.7 percent nationally in the first quarter of 2005 to \$10,090,897 million. Pennsylvania saw an increase of 0.7 percent to \$431,740 million. National per capita personal income stood at \$32,937 in 2004, a 4.7 percent rise from 2003. Pennsylvania, at \$33,438, showed a 4.8 percent increase and ranked 19th in the nation.

Source: U.S. Department of Commerce, Bureau of Economic Analysis.

Percent Change in Personal Income: United States and Pennsylvania,
First Quarter 2004 - First Quarter 2005

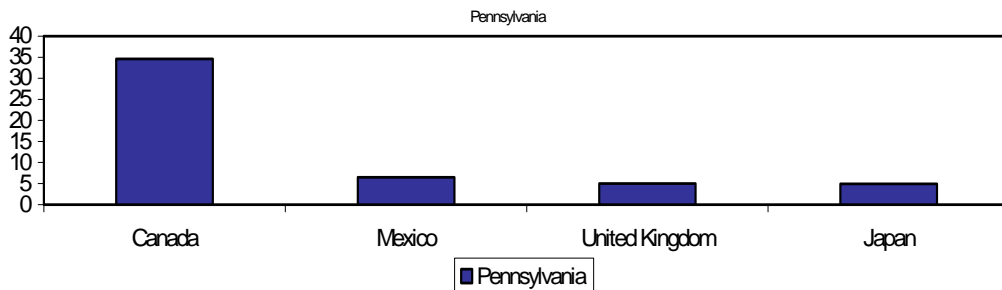


Exports

In 2004, 17.5 percent of Pennsylvania's exports were chemical products. Other top categories were non-electrical machinery (13.1 percent) and computer and electronics (11.9 percent). Pennsylvania ranked 15th in the nation in 2004, exporting 2.3 percent of the nation's total exports. Canada remained the top destination country for exports, receiving 35.6 percent of Pennsylvania's total exports. Mexico, Japan and the United Kingdom followed.

Source: U.S. Census Bureau, refined by Massachusetts Institute for Social and Economic Research (MISER).

Percent of Total Exports by Top Destination Countries: Pennsylvania, 2004



For additional information, contact the Pennsylvania State Data Center.

Pennsylvania State Data Center
Penn State Harrisburg
777 West Harrisburg Pike
Middletown, PA 17057-4898

Phone: 717.948.6336
Fax: 717.948.6754
Email: PaSDC-DATA@psu.edu
URL: PaSDC.hbg.psu.edu