



Pennsylvania Economic Indicators

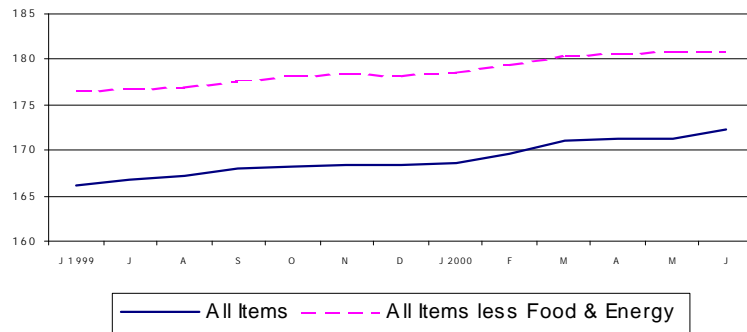
SECOND QUARTER 2000

Consumer Price Index

The Consumer Price Index for All Urban Consumer (CPI-U) rose to 172.3 in June 2000 from 171.3 the previous month. This represents a 3.7 percent increase from June 1999. On a seasonally adjusted basis, the CPI-U rose by 0.6 percent in June 2000 after increasing 0.06 percent in May. Excluding food and energy, the CPI-U rose remained constant in June, following a 0.06 percent rise in May.

Source: U.S. Department of Labor, Bureau of Labor Statistics.

Consumer Price Index: United States, June 1999 - June 2000



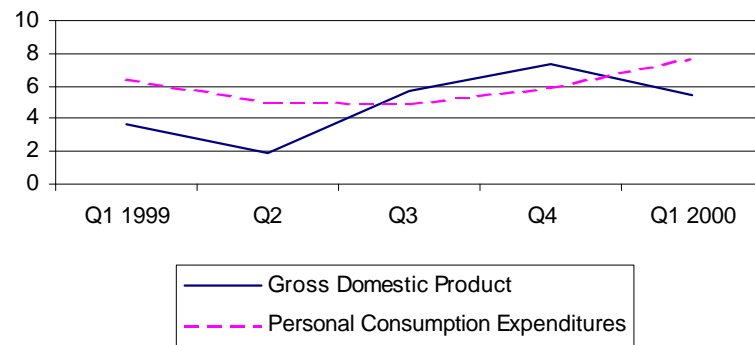
Gross Domestic Product

Real gross domestic product (GDP) increased at an annual rate of 5.5 percent in the first quarter of 2000, according to the national income and product accounts (NIPA's). Real personal consumption expenditures (PCE) increased 7.7 percent after increasing 5.9 percent in the fourth quarter 1999. Durable goods purchases increased 24.3 percent, compared to 13.0 percent in the fourth quarter. Nondurable goods increased 5.8 percent and services increased 5.5 percent.

Source: U.S. Department of Commerce, Bureau of Economic Analysis.

Note: 1st Quarter 2000 is the most current data available.

Percent Change in Gross Domestic Product at Seasonally Adjusted Rates: United States, First Quarter 1999 - First Quarter 2000

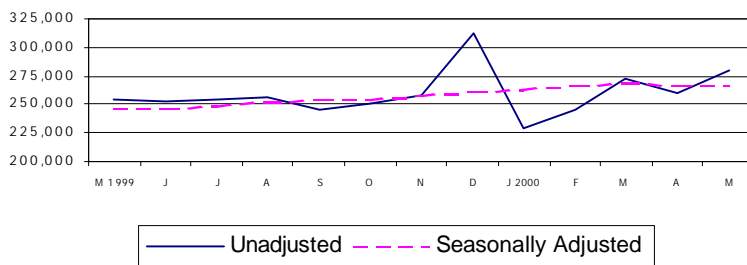


Retail Sales

Retail sales for May 2000 of \$279,463 million represent a 7.4 percent increase from April 2000 and a 97.8 percent increase from May 1999. On a seasonally adjusted basis, sales increased 0.3 percent from April 2000 and 8.3 percent from May 1999.

Source: U.S. Department of Commerce, Bureau of the Census.

Retail Sales - Millions of Current Dollars: United States, May 1999 - May 2000

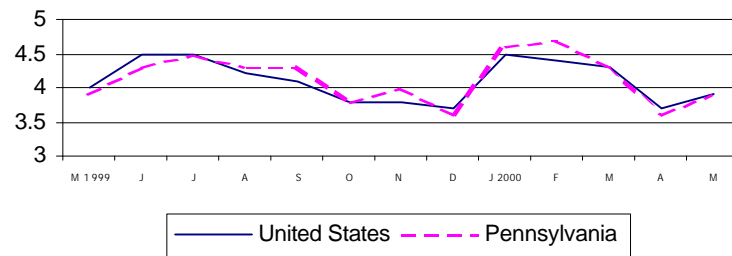


Unemployment Rate

The national unemployment rate increased to 3.9 in May 2000 from 3.7 in April. Pennsylvania's unemployment rate increased to 3.9 percent from April's 3.6. This May 2000 rate equals the May 1999 rate also of 3.9 percent.

Source: Pennsylvania Department of Labor and Industry.

Unemployment Rate (Percent): United States and Pennsylvania, May 1999 - May 2000

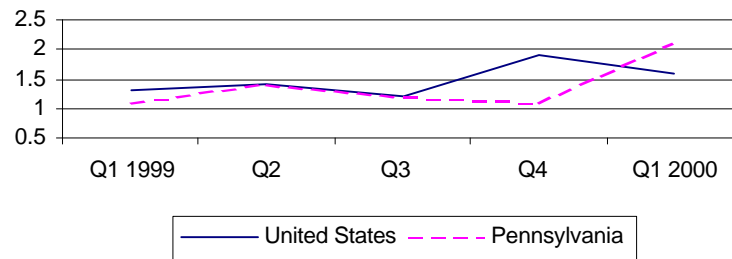


Personal Income

Personal Income rose 1.6 percent nationally in the first quarter of 2000 to \$8,090,997 million. Pennsylvania saw an increase of 2.1 percent to \$357,715 million. National per capita personal income stood at \$28,518 in 1999, a 4.8 percent rise from 1998. Pennsylvania, at \$28,676, showed a 4.4 percent increase and ranked 16th in the nation.

Source: U.S. Department of Commerce, Bureau of Economic Analysis.

Percent Change in Personal Income: United States and Pennsylvania, First Quarter 1999 - First Quarter 2000

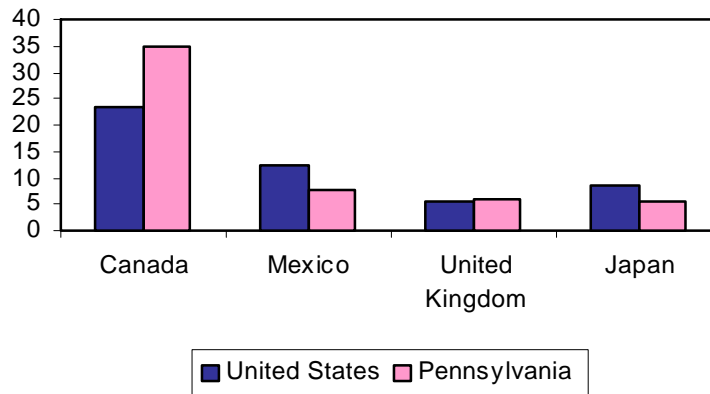


Exports

In 1999, 17 percent of Pennsylvania's exports were industrial machinery and computer equipment. Other top categories were chemicals and allied products (15 percent) and electronics and electrical equipment (15 percent). Transportation equipment was the nation's largest export at 18 percent. Canada remained the top destination country for exports receiving 24 percent of U.S. totals and 35 percent of Pennsylvania's.

Source: U.S. Census Bureau, refined by Massachusetts Institute for Social and Economic Research (MISER).

Percent of Total Exports by Top Destination Countries: United States and Pennsylvania, 1999



For additional information, contact the Pennsylvania State Data Center.

Pennsylvania State Data Center
Penn State Harrisburg
777 West Harrisburg Pike
Middletown, PA 17-57-4898

Phone: (717) 948-6336
Fax: (717) 948-6754
Email: PaSDC-DATA@psu.edu
URL: psdc.hbg.psu.edu