

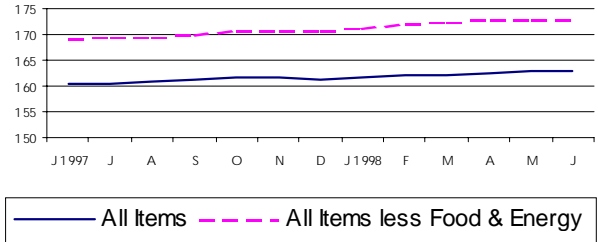
Pennsylvania Economic Indicators

Consumer Price Index (CPI-U)

The Consumer Price Index for All Urban Consumers (CPI-U) rose 0.1 percent in June to 163.0. This represents a 1.7 percent increase from June of 1997. On a seasonally adjusted basis, the CPI-U rose 0.1 percent in June after increasing 0.3 percent in May. Excluding food and energy, the CPI-U increased 0.1 percent in June, following a 0.2 percent rise in May.

Source: U.S. Department of Labor, Bureau of Labor Statistics.

US Consumer Price Index, CPI-U (1982-84=100)

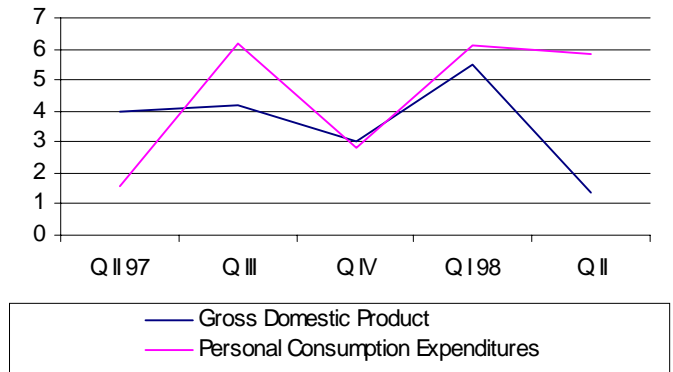


Gross Domestic Product

Real gross domestic product (GDP) increased at an annual rate of 1.4 percent in the second quarter of 1998, according to advance estimates of the national income and product accounts (NIPA's). Real personal consumption expenditures (PCE) increased 5.8 percent in the second quarter after increasing 6.1 percent in the first. Durable goods purchases increased 10.0 percent, compared to 15.8 percent in the first quarter. Nondurable goods increased 5.9 percent and services increased 4.8 percent.

Source: U.S. Department of Commerce, Bureau of Economic Analysis.

Percent Change at Seasonally Adjusted Rates

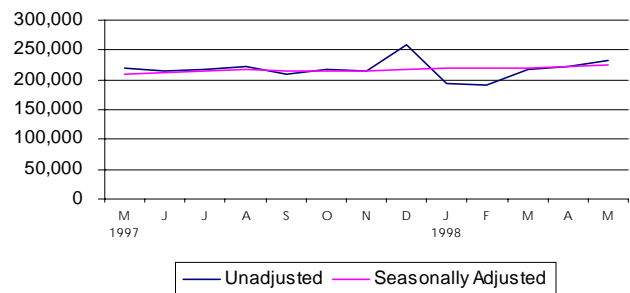


Retail Sales

Retail sales for May, \$232,404 million, represent a 5.1 percent increase from April, and a 5.2 percent increase from May 1997. On a seasonally adjusted basis, sales increased 1.2 percent from April and 7.1 percent from 1997.

Source: U.S. Department of Commerce, Bureau of the Census.

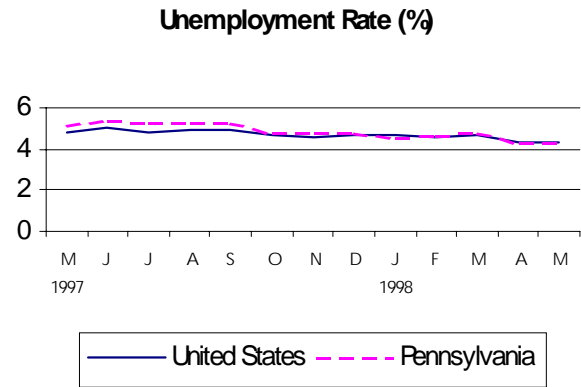
US Retail Sales - Millions of Current Dollars



Unemployment Rate

The national unemployment rate was unchanged in May at 4.3, but down from the May 1997 rate, 4.8 percent. Pennsylvania's unemployment rate also remained at 4.3 percent for April and May. This is a decrease from the 1997 rate of 5.2 percent. Pennsylvania's unemployment rate has remained below 5.0 percent since October of 1997.

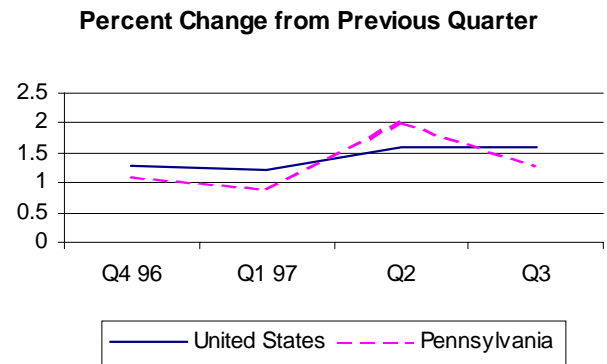
Source: U.S. Department of Labor, Bureau of Labor Statistics and PA Department of Labor and Industry.



Personal Income

Personal Income nationally rose 1.1 percent nationally in the third quarter to \$6,890,952 million. Pennsylvania saw an increase of 1.0 percent to \$314,925 million. Per Capita personal income stood at \$24,426 in 1996, a 4.6 percent change from 1995. Pennsylvania, at \$24,803, a 5.0 percent increase, ranked 17th.

Source: U.S. Department of Commerce, Bureau of Economic Analysis.



Exports

In 1997, the largest percentage of Pennsylvania's exports, 20.3 percent, was industrial and commercial machinery, including computers. Other top categories consist of electronic and electrical equipment (14.9 percent) and chemical and allied products (12.0 percent). The largest percentage of U.S. exports, 20.1 percent, were transportation equipment. In 1997, Canada remained the top importer of Pennsylvania and U.S. exports. Exports to Canada made up 34.0 percent of Pennsylvania (21.8 percent of U.S.) total exports.

Source: State-specific export figures are released by the U.S. Census Bureau's Foreign Trade Division and refined by the Massachusetts Institute for Social and Economic Research (MISER).

