



Pennsylvania Economic Indicators

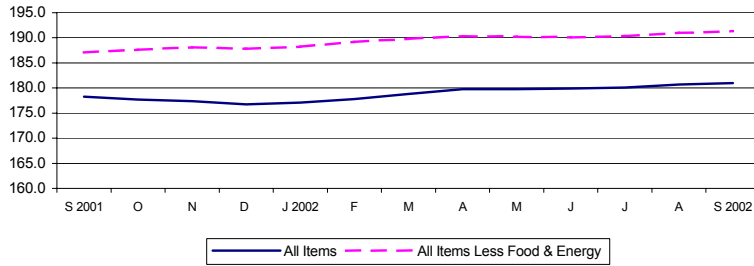
THIRD QUARTER 2002

Consumer Price Index

The Consumer Price Index for All Urban Consumers (CPI-U) increased to 181.0 in September 2002 from 180.7 in August. This represents a 0.2 percent increase from August 2002, and a 1.5 percent increase from September 2001. Excluding food and energy, the CPI-U (not seasonally adjusted) increased to 191.3 in September 2002. This represents a 0.2 percent increase from August 2002, and a 2.2 percent increase from September 2001.

Source: U.S. Department of Labor, Bureau of Labor Statistics.

Consumer Price Index: United States, September 2001 – September 2002 (Not Seasonally Adjusted)

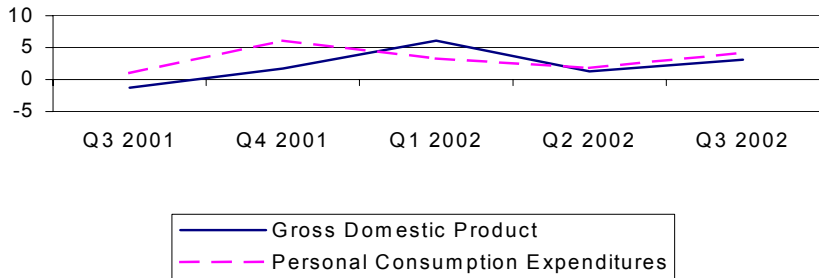


Gross Domestic Product

Real gross domestic product (GDP) increased at an annual rate of 3.1 percent in the third quarter of 2002 after an increase of 1.3 percent in the second quarter of 2002, according to the national income and product accounts (NIPA's). Real personal consumption expenditures (PCE) increased 4.2 percent after increasing 1.8 percent in the second quarter of 2002. Durable goods purchases increased 22.7 percent, compared to a 2.0 percent increase in the second quarter. Nondurable goods increased 1.3 percent and services increased 2.3 percent.

Source: U.S. Department of Commerce, Bureau of Economic Analysis.
Note: 3rd Quarter data is advanced and subject to revision.

Percent Change in Gross Domestic Product (Seasonally Adjusted Rates) United States, Third Quarter 2001 – Third Quarter 2002



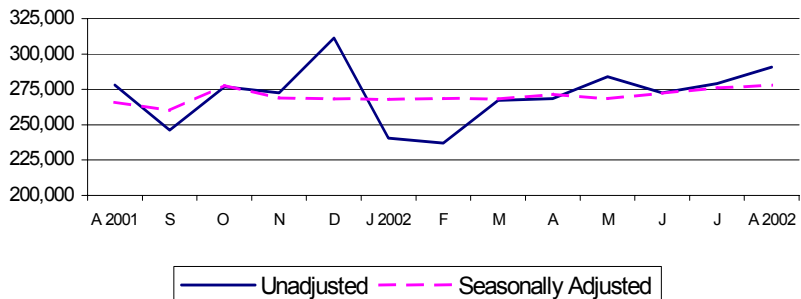
Retail Sales

Retail sales for August 2002 of \$290,812 million represent a 4.2 percent increase from July 2002 and a 4.6 percent increase from August 2001. On a seasonally adjusted basis, retail sales increased 0.6 percent from July 2002, and increased 4.5 percent from August 2001.

August 2002 are most recent figures and are preliminary.

Source: U.S. Department of Commerce, Bureau of the Census.

Retail Sales - Millions of Current Dollars: United States, August 2001- August 2002

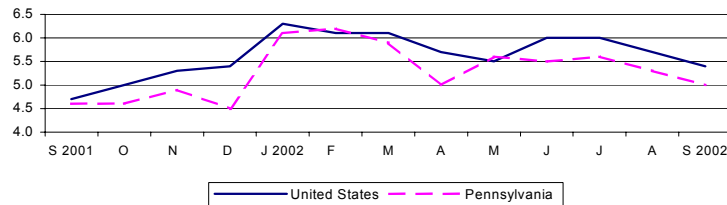


Unemployment Rate

The national unemployment rate decreased to 5.4 percent in September 2002 from 5.7 percent in August 2002. Pennsylvania's unemployment rate decreased from 5.3 percent in August 2002 to 5.0 percent in September 2002. Pennsylvania's rate increased from a rate of 4.6 percent in September of 2001.

Source: Pennsylvania Department of Labor and Industry.

Unemployment Rate (Percent): United States and Pennsylvania
September 2001 - September 2002 (Unadjusted)



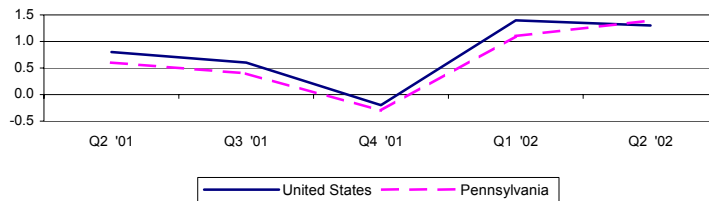
Personal Income

Personal income increased 1.3 percent nationally in the second quarter of 2002 to \$8,904,969 million. Pennsylvania saw an increase of 1.4 percent to \$392,413 million. National per capita personal income stood at \$30,472 in 2001, a 2.4 percent rise from 2000. Pennsylvania, at \$30,720, showed a 3.4 percent increase and ranked 16th in the nation.

Source: U.S. Department of Commerce, Bureau of Economic Analysis.

Note: 2nd Quarter 2002 is the most current data available. 2001 most current for per capita.

Percent Change in Personal Income: United States and Pennsylvania,
Second Quarter 2001 - Second Quarter 2002

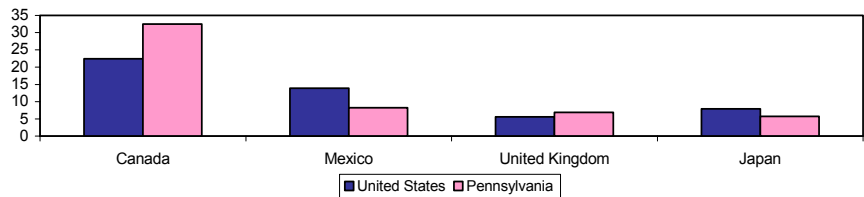


Exports

In 2001, 16.9 percent of Pennsylvania's exports were computer and electronic products. Other top categories were non-electrical machinery (15.4 percent) and chemicals (13.9 percent). Pennsylvania ranked 11th in the nation in 2001, exporting 2.4 percent of the nation's total exports. Canada remained the top destination country for exports, receiving 22.4 percent of nation's total exports and 32.5 percent of Pennsylvania's total exports.

Source: U.S. Census Bureau, refined by Massachusetts Institute for Social and Economic Research (MISER).

Percent of Total Exports by Top Destination Countries: United States and Pennsylvania, 2001



For additional information, contact the Pennsylvania State Data Center.

Pennsylvania State Data Center
Penn State Harrisburg
777 West Harrisburg Pike
Middletown, PA 17057-4898

Phone: 717.948.6336
Fax: 717.948.6754
Email: PaSDC-DATA@psu.edu
URL: PaSDC.hbg.psu.edu