



Pennsylvania Economic Indicators

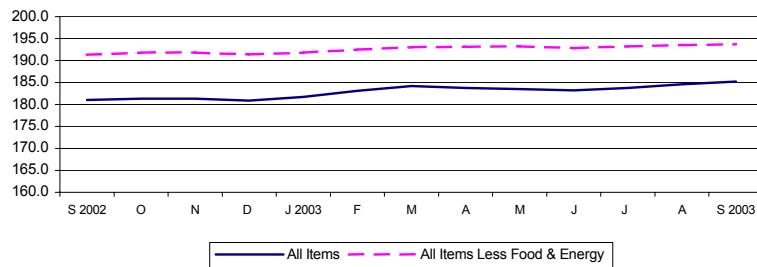
THIRD QUARTER 2003

Consumer Price Index

The Consumer Price Index for All Urban Consumers (CPI-U) increased to 185.2 in September 2003 from 184.6 in August. This represents a 0.3 percent increase from August 2003, and a 2.3 percent increase from September 2002. Excluding food and energy, the CPI-U (not seasonally adjusted) increased to 193.6 in September 2003. This represents a 0.1 percent increase from August 2003, and a 1.2 percent increase from September 2002.

Source: U.S. Department of Labor, Bureau of Labor Statistics.

Consumer Price Index: United States, September 2002 - September 2003 (Not Seasonally Adjusted)

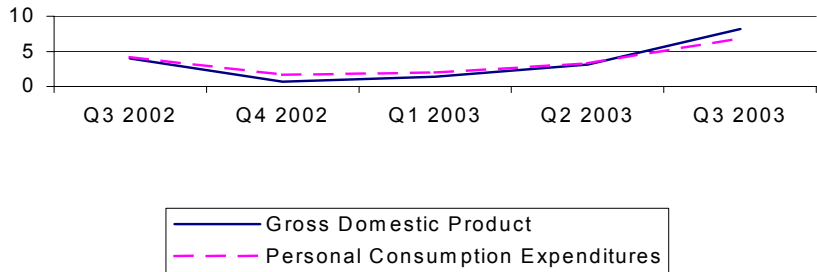


Gross Domestic Product

Real gross domestic product (GDP) increased at an annual rate of 8.2 percent in the third quarter of 2003 after an increase of 3.1 percent in the second quarter of 2003, according to the national income and product accounts (NIPA's). Real personal consumption expenditures (PCE) increased 6.9 percent after increasing 3.3 percent in the second quarter of 2003. Durable goods purchases decreased 28.0 percent, compared to a 17.7 percent decrease in the second quarter. Nondurable goods increased 7.3 percent and services increased 2.8 percent.

Source: U.S. Department of Commerce, Bureau of Economic Analysis.

Percent Change in Gross Domestic Product (Seasonally Adjusted Rates) United States, Third Quarter 2002 - Third Quarter 2003

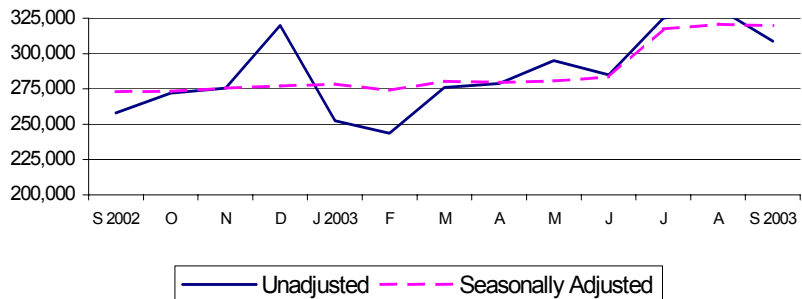


Retail Sales

Retail sales for September 2003 of \$308,814 million represent a 7 percent decrease from August 2003 and a 19.7 percent increase from September 2002. On a seasonally adjusted basis, retail sales decreased 0.3 percent from August 2003, and increased 17.1 percent from September 2002.

Source: U.S. Department of Commerce, Bureau of the Census.

Retail Sales - Millions of Current Dollars: United States, September 2002 - September 2003

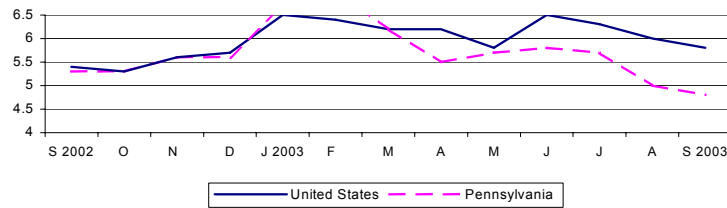


Unemployment Rate

The national unemployment rate decreased to 5.8 percent in September 2003 from 6 percent in August 2002. Pennsylvania's unemployment rate decreased from 5 percent in August 2003 to 4.8 percent in September 2003. Pennsylvania's rate decreased from a rate of 5.3 percent in August of 2002.

Source: Pennsylvania Department of Labor and Industry.

Unemployment Rate (Percent): United States and Pennsylvania
September 2002 - September 2003 (Unadjusted)

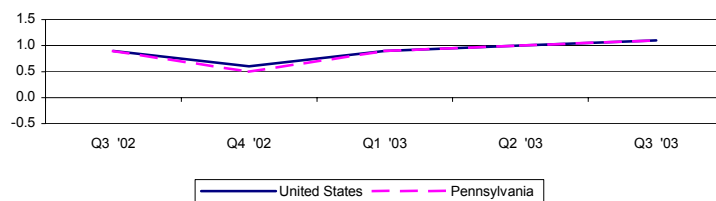


Personal Income

Personal income increased 1.1 percent nationally in the third quarter of 2003 to \$9,248,017 million. Pennsylvania saw an increase of 1.1 percent to \$406,915 million. National per capita personal income stood at \$30,941 in 2002, a 1.7 percent rise from 2001. Pennsylvania, at \$31,727, showed a 3.2 percent increase and ranked 15th in the nation.

Source: U.S. Department of Commerce, Bureau of Economic Analysis.

Percent Change in Personal Income: United States and Pennsylvania,
Third Quarter 2002 - Third Quarter 2003

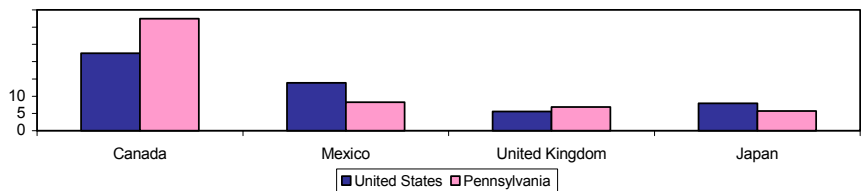


Exports

In 2001, 16.9 percent of Pennsylvania's exports were computer and electronic products. Other top categories were non-electrical machinery (15.4 percent) and chemicals (13.9 percent). Pennsylvania ranked 11th in the nation in 2001, exporting 2.4 percent of the nation's total exports. Canada remained the top destination country for exports, receiving 22.4 percent of the nation's total exports and 32.5 percent of Pennsylvania's total exports.

Source: U.S. Census Bureau, refined by Massachusetts Institute for Social and Economic Research (MISER).

Percent of Total Exports by Top Destination Countries: United States and
Pennsylvania, 2001



For additional information, contact the Pennsylvania State Data Center.

Pennsylvania State Data Center
Penn State Harrisburg
777 West Harrisburg Pike
Middletown, PA 17057-4898

Phone: 717.948.6336
Fax: 717.948.6754
Email: PaSDC-DATA@psu.edu
URL: PaSDC.hbg.psu.edu