



Pennsylvania Economic Indicators

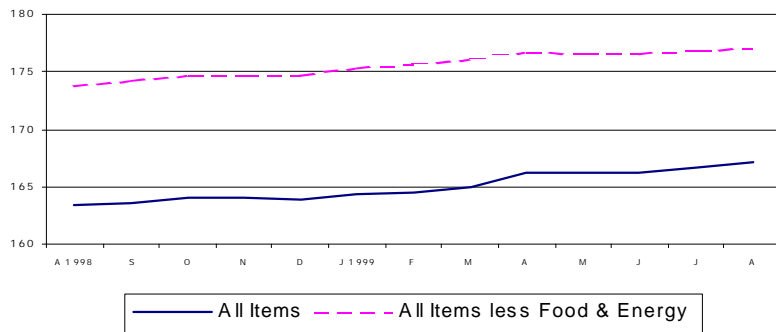
THIRD QUARTER 1999

Consumer Price Index

The Consumer Price Index for All Urban Consumer (CPI-U) rose to 167.1 in August 1999 from 166.7 the previous month. This represents a 2.3 percent increase from August 1998. On a seasonally adjusted basis, the CPI-U rose by 0.3 percent in August 1999 after increasing 0.3 percent in July. Excluding food and energy, the CPI-U rose 0.1 percent in August, following a 0.2 percent rise in July.

Source: U.S. Department of Labor, Bureau of Labor Statistics.

US Consumer Price Index, CPI-U



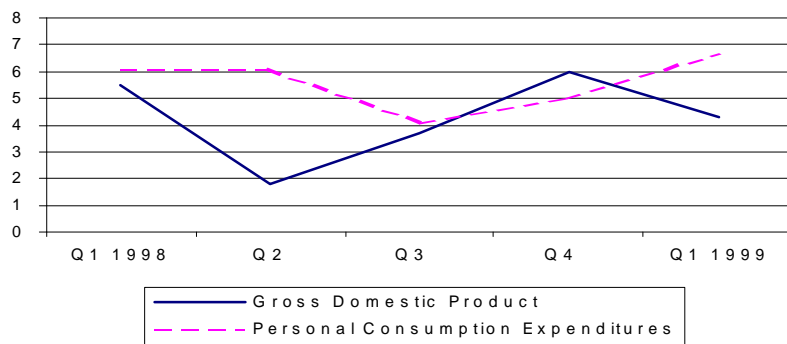
Gross Domestic Product

Real gross domestic product (GDP) increased at an annual rate of 4.3 percent in the first quarter of 1999, according to the national income and product accounts (NIPA's). Real personal consumption expenditures (PCE) increased 6.7 percent after increasing 5.0 percent in the fourth quarter 1998. Durable goods purchases increased 12.9 percent, compared to 24.5 percent in the fourth quarter. Nondurable goods increased 9.5 percent and services increased 4.1 percent.

Source: U.S. Department of Commerce, Bureau of Economic Analysis.

Note: 1st Quarter 1999 is the most current data available.

Percent Change at Seasonally Adjusted Rates

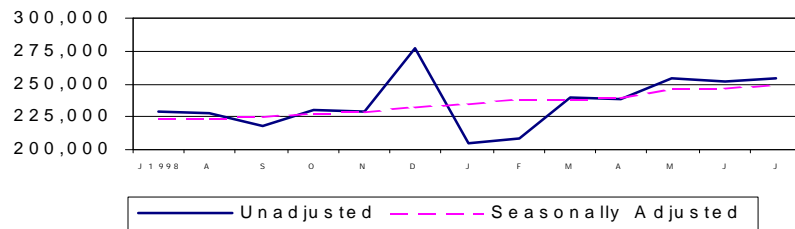


Retail Sales

Retail sales for July 1999 of \$254,770 million represent a 1.0 percent increase from June 1999 and a 11.3 percent increase from July 1998. On a seasonally adjusted basis, sales increased 1.0 percent from June 1999 and 11.2 percent from July 1998.

Source: U.S. Department of Commerce, Bureau of the Census.

US Retail Sales-Millions of Current Dollars

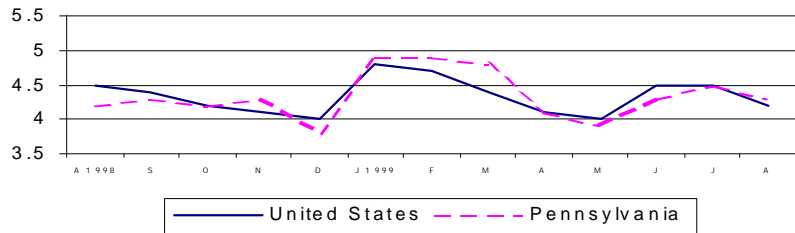


Unemployment Rate

The national unemployment rate decreased to 4.2 in August 1999 from 4.5 in July. Pennsylvania's unemployment rate also decreased to 4.3 percent from July's 4.5. This represents a slight increase from the August 1998 rate of 4.2 percent.

Source: Pennsylvania Department of Labor and Industry.

Unemployment Rate (%)

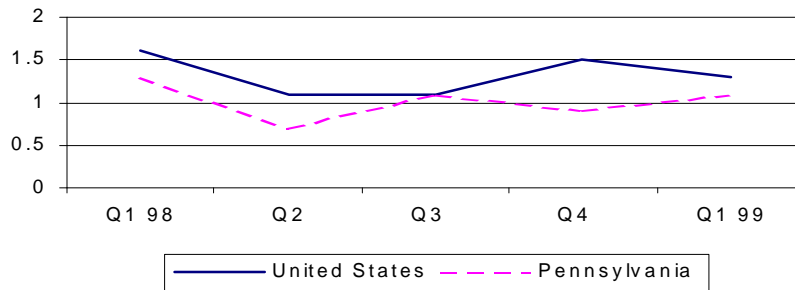


Personal Income

Personal Income rose 1.3 percent nationally in the first quarter of 1999 to \$7,400,243 million. Pennsylvania also saw an increase of 1.1 percent to \$332,119 million. National per capita personal income stood at \$26,412 in 1998, a 4.4 percent rise from 1997. Pennsylvania, at \$26,792, also showed a 4.4 percent increase and ranked 17th in the nation.

Source: U.S. Department of Commerce, Bureau of Economic Analysis.

Percent Change in Personal Income from Previous Quarter

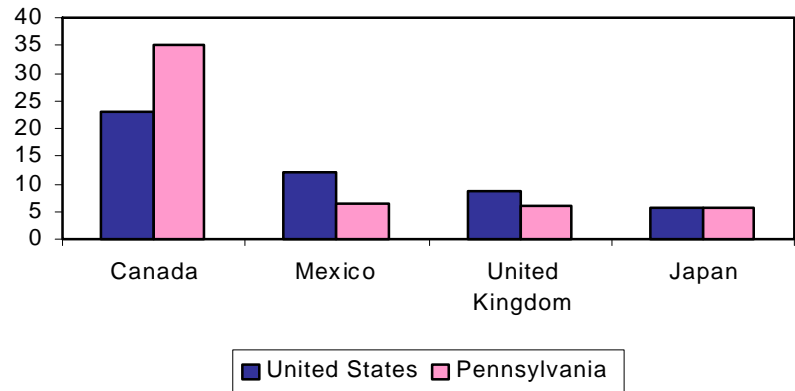


Exports

In 1998, 18 percent of Pennsylvania's exports were industrial machinery and computer equipment. Other top categories were electronics and electrical equipment (14 percent) and chemicals and allied products (13 percent). Transportation equipment was the nation's largest export at 19 percent. Canada remained the top destination country for exports receiving 23 percent of U.S. totals and 35 percent of Pennsylvania's.

Source: U.S. Census Bureau, refined by Massachusetts Institute for Social and Economic Research (MISER).

Percent of Total 1998 Exports by Top Destination Countries



For more information, contact the Pennsylvania State Data Center.

Pennsylvania State Data Center
Penn State Harrisburg
777 West Harrisburg Pike
Middletown, PA 17057

Phone: (717) 948-6336
Fax: (717) 948-6754
Email: PaSDC@psu.edu
URL: psdc.hbg.psu.edu