



Pennsylvania Economic Indicators

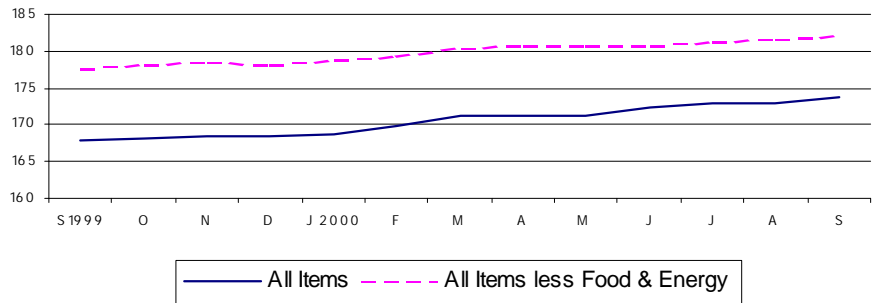
THIRD QUARTER 2000

Consumer Price Index

The Consumer Price Index for All Urban Consumer (CPI-U) rose to 173.7 in September 2000 from 172.8 in August. This represents a 3.5 percent increase from September 1999. On a seasonally adjusted basis, the CPI-U rose by 0.5 percent in September 2000 after decreasing 0.06 percent in August. Excluding food and energy, the CPI-U rose .27 percent from August to September.

Source: U.S. Department of Labor, Bureau of Labor Statistics.

States, September 1999 - September 2000



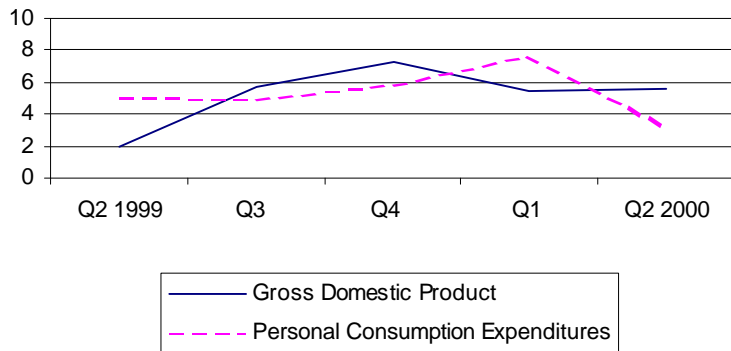
Gross Domestic Product

Real gross domestic product (GDP) increased at an annual rate of 5.6 percent in the second quarter of 2000, according to the national income and product accounts (NIPA's). Real personal consumption expenditures (PCE) increased 3.1 percent after increasing 7.7 percent in the first quarter 2000. Durable goods purchases increased 5.0 percent, compared to 24.3 percent in the first quarter. Nondurable goods increased 3.6 percent and services increased 4.6 percent.

Source: U.S. Department of Commerce, Bureau of Economic Analysis.

Note: 2nd Quarter 2000 is the most current data available.

Percent Change in Gross Domestic Product at Seasonally Adjusted Rates: United States, Second Quarter 1999 - Second Quarter 2000

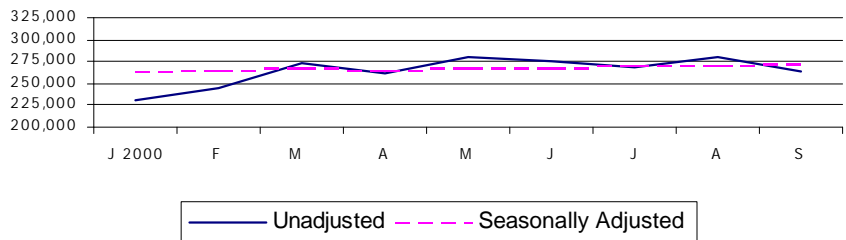


Retail Sales

Retail sales for September 2000 of \$273,237 million represent a 0.9 percent increase from August 2000 and a 7.68 percent increase from September 1999. Total Retail Sales for the first three quarters of 2000 equal \$2,375,740 million, a 9.3 percent increase from 1999.

Source: U.S. Department of Commerce, Bureau of the Census.

Retail Sales - Millions of Current Dollars: United States, January 2000 - September 2000



United

PENNSTATE



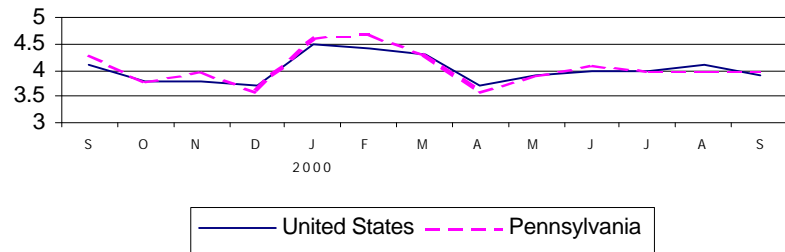
Institute of State and Regional Affairs

Unemployment Rate

The national unemployment rate decreased to 3.9 percent in September 2000 from 4.1 percent in August. Pennsylvania's unemployment rate remained steady at 4.0 percent. The September 2000 rate was a decrease from the 4.3 percent a year ago.

Source: Pennsylvania Department of Labor and Industry.

Unemployment Rate (Percent): United States and Pennsylvania, September 1999 - September 2000



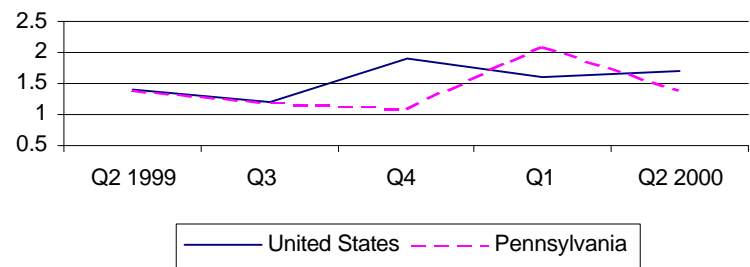
Personal Income

Personal Income rose 1.7 percent nationally in the second quarter of 2000 to \$8,237,804 million. Pennsylvania saw an increase of 1.4 percent to \$356,907 million. National per capita personal income stood at \$28,542 in 1999, a 4.5 percent rise from 1998. Pennsylvania, at \$28,605, showed a 4.6 percent increase and ranked 17th in the nation.

Source: U.S. Department of Commerce, Bureau of Economic Analysis.

Note: 2nd Quarter 2000 is the most current data available.

Percent Change in Personal Income: United States and Pennsylvania, Second Quarter 1999 - Second Quarter 2000

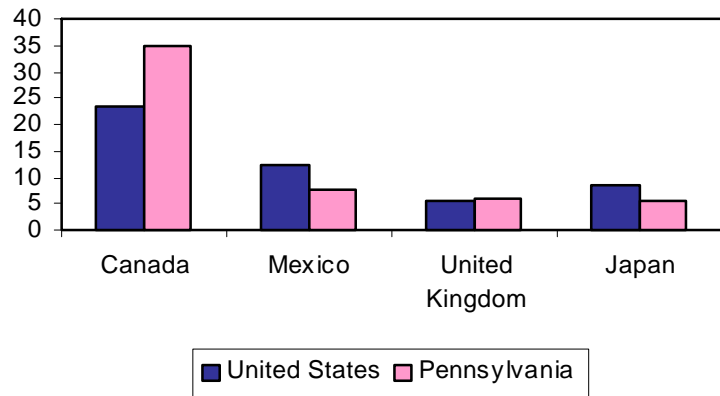


Exports

In 1999, 17 percent of Pennsylvania's exports were industrial machinery and computer equipment. Other top categories were chemicals and allied products (15 percent) and electronics and electrical equipment (15 percent). Transportation equipment was the nation's largest export at 18 percent. Canada remained the top destination country for exports receiving 24 percent of U.S. totals and 35 percent of Pennsylvania's.

Source: U.S. Census Bureau, refined by Massachusetts Institute for Social and Economic Research (MISER).

Percent of Total Exports by Top Destination Countries: United States and Pennsylvania, 1999



For additional information, contact the Pennsylvania State Data Center.

Pennsylvania State Data Center
Penn State Harrisburg
777 West Harrisburg Pike
Middletown, PA 17057-4898

Phone: (717) 948-6336
Fax: (717) 948-6754
Email: PaSDC-DATA@psu.edu
URL: pasdc.hbg.psu.edu