



# Pennsylvania Economic Indicators

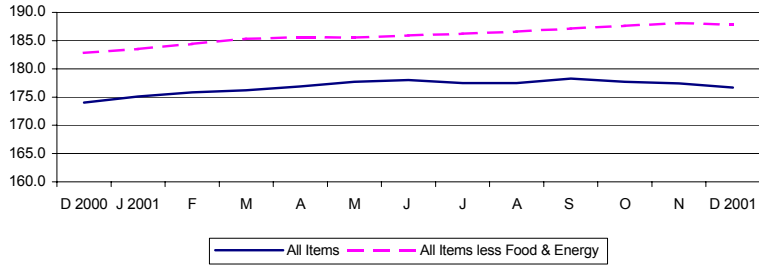
FOURTH QUARTER 2001

## Consumer Price Index

The Consumer Price Index for All Urban Consumers (CPI-U) decreased to 176.7 in December 2001 from 177.4 in November. This represents a 0.4 percent decrease from November 2001, and a 1.6 percent increase from December 2000. Excluding food and energy, the CPI-U (not seasonally adjusted) decreased to 187.8 in December 2001. This represents a 0.2 percent decrease from November 2001, and a 2.7 percent increase from December 2000.

Source: U.S. Department of Labor, Bureau of Labor Statistics.

Consumer Price Index: United States, December 2000 - December 2001 ( Not Seasonally Adjusted )

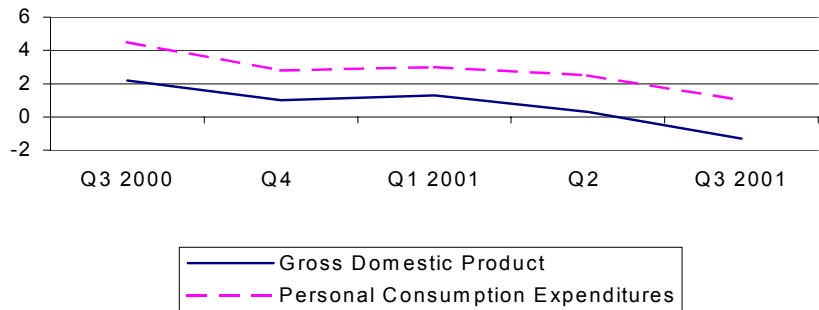


## Gross Domestic Product

Real gross domestic product (GDP) decreased at an annual rate of 1.3 percent in the third quarter of 2001 after a 0.3 percent increase in the second quarter of 2001, according to the national income and product accounts (NIPAs). Real personal consumption expenditures (PCE) increased 1.0 percent after increasing 2.5 percent in the second quarter 2001. Durable goods purchases increased 0.9 percent, compared to a 7.0 percent increase in the second quarter. Nondurable goods increased 0.6 percent and services increased 1.2 percent.

Source: U.S. Department of Commerce, Bureau of Economic Analysis.  
Note: 3rd Quarter 2001 is most current data available.

Percent Change in Gross Domestic Product ( Seasonally Adjusted Rates ) United States, Third Quarter 2000 - Third Quarter 2001



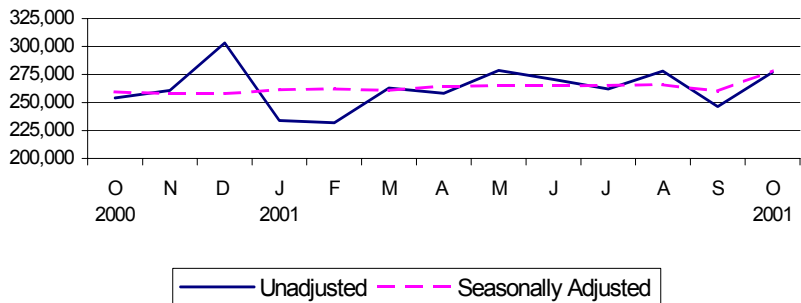
## Retail Sales

Retail sales for October 2001 of \$277,000 million represent a 12.5 percent increase from September 2001 and a 9.1 percent increase from October 2000. On a seasonally adjusted basis, retail sales increased 7.0 percent from September 2001, and 7.2 percent from October 2000.

October 2001 are most recent final figures.

Source: U.S. Department of Commerce, Bureau of the Census.

Retail Sales - Millions of Current Dollars: United States, October 2000-October 2001

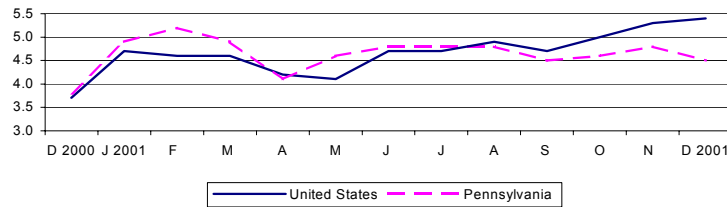


## Unemployment Rate

The national unemployment rate increased from 5.3 percent in November to 5.4 percent in December of 2001. Pennsylvania's unemployment rate decreased from 4.8 percent in November 2001 to 4.5 percent in December 2001. Pennsylvania's rate increased from a rate of 3.8 percent in December of 2000.

Source: Pennsylvania Department of Labor and Industry.

Unemployment Rate (Percent): United States and Pennsylvania, December 2000 - December 2001 (Unadjusted)

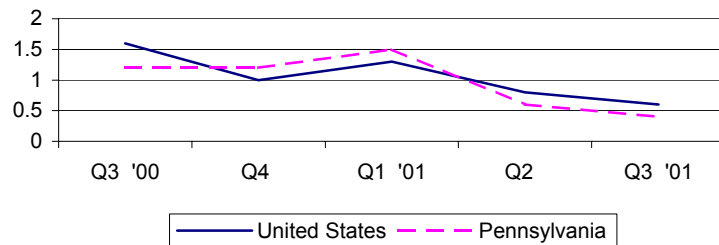


## Personal Income

Personal income rose 0.6 percent nationally in the third quarter of 2001 to \$8,761,374 million. Pennsylvania saw an increase of 0.4 percent to \$381,855 million. National per capita personal income stood at \$29,676 in 2000, a 4.0 percent rise from 1999. Pennsylvania, at \$29,539, showed a 3.3 percent increase and ranked 18<sup>th</sup> in the nation.

Source: U.S. Department of Commerce, Bureau of Economic Analysis.  
Note: 3rd Quarter 2001 is the most current data available. 2000 most current for per capita.

Percent Change in Personal Income: United States and Pennsylvania, Third Quarter 2000 - Third Quarter 2001

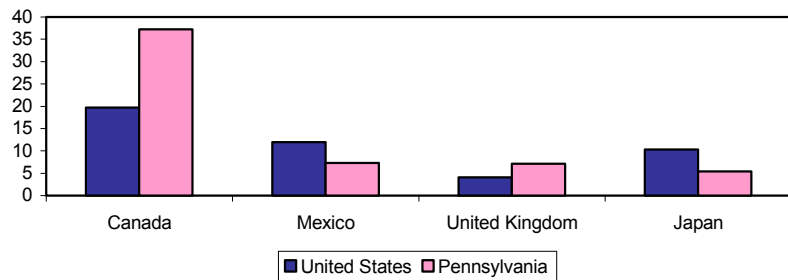


## Exports

In 2000, 16.1 percent of Pennsylvania's exports were industrial machinery and computer equipment. Other top categories were electronics and electrical equipment (14.5 percent) and chemicals and allied products (13.3 percent). Pennsylvania ranked 10<sup>th</sup> in the nation in 2000 exporting 2.6 percent of the nation's total exports. Canada remained the top destination country for exports, receiving 19.7 percent of nation's total exports and 37.2 percent of Pennsylvania's total exports.

Source: U.S. Census Bureau, refined by Massachusetts Institute for Social and Economic Research (MISER).

Percent of Total Exports by Top Destination Countries: United States and Pennsylvania, 2000



For additional information, contact the Pennsylvania State Data Center.

Pennsylvania State Data Center  
Penn State Harrisburg  
777 West Harrisburg Pike  
Middletown, PA 17057-4898

Phone: 717.948.6336  
Fax: 717.948.6754  
Email: PaSDC-DATA@psu.edu  
URL: PaSDC.hbg.psu.edu