



# Pennsylvania Economic Indicators

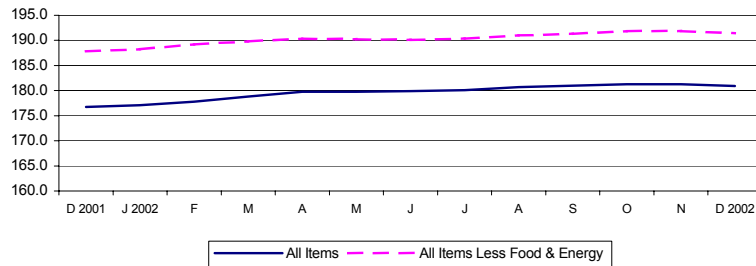
FOURTH QUARTER 2002

## Consumer Price Index

The Consumer Price Index for All Urban Consumers (CPI-U) decreased to 180.9 in December 2002 from 181.3 in November. This represents a 0.2 percent decrease from November 2002, and a 2.4 percent increase from December 2001. Excluding food and energy, the CPI-U (not seasonally adjusted) decreased to 191.4 in December 2002. This represents a 0.2 percent decrease from November 2002, and a 1.9 percent increase from December 2001.

Source: U.S. Department of Labor, Bureau of Labor Statistics.

Consumer Price Index: United States, December 2001 – December 2002 (Not Seasonally Adjusted)



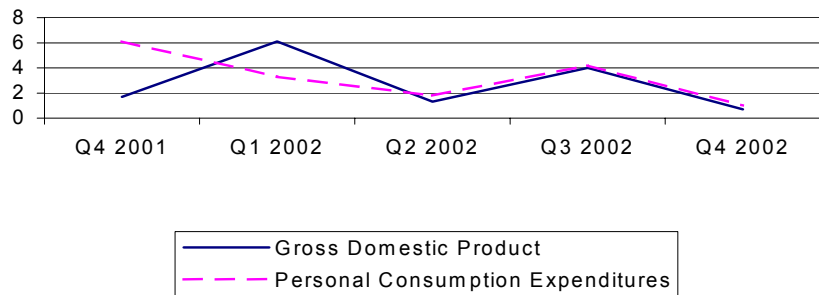
## Gross Domestic Product

Real gross domestic product (GDP) increased at an annual rate of 0.7 percent in the fourth quarter of 2002 after an increase of 4.0 percent in the third quarter of 2002, according to the national income and product accounts (NIPA's). Real personal consumption expenditures (PCE) increased 1.0 percent after increasing 4.2 percent in the third quarter of 2002. Durable goods purchases decreased 7.3 percent, compared to a 22.8 percent increase in the third quarter. Nondurable goods increased 3.9 percent and services increased 1.3 percent.

Source: U.S. Department of Commerce, Bureau of Economic Analysis.

Note: 4<sup>th</sup> Quarter data is advanced and subject to revision.

Percent Change in Gross Domestic Product (Seasonally Adjusted Rates) United States, Fourth Quarter 2001 – Fourth Quarter 2002



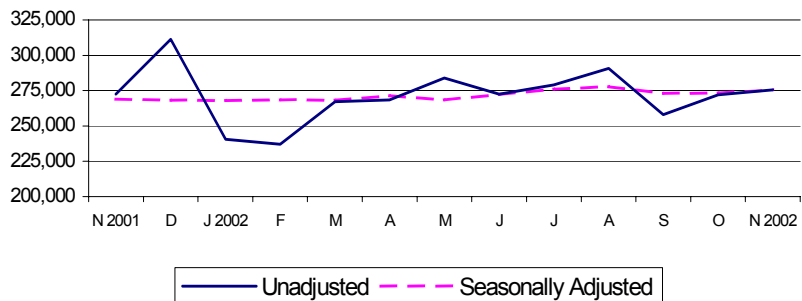
## Retail Sales

Retail sales for November 2002 of \$275,468 million represent a 1.2 percent increase from October 2002 and a 1.1 percent increase from November 2001. On a seasonally adjusted basis, retail sales increased 0.9 percent from October 2002, and increased 2.5 percent from November 2001.

November 2002 are most recent figures and are preliminary.

Source: U.S. Department of Commerce, Bureau of the Census.

Retail Sales - Millions of Current Dollars: United States, November 2001- November 2002

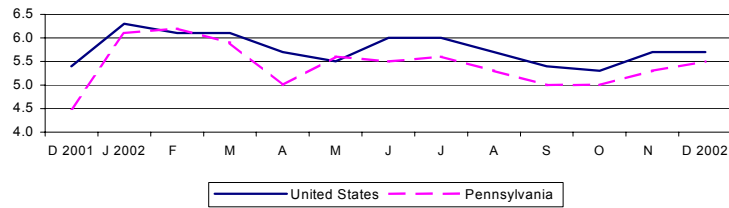


## Unemployment Rate

The national unemployment rate remained constant at 5.7 percent in December 2002 from 5.7 percent in November 2002. Pennsylvania's unemployment rate increased from 5.3 percent in November 2002 to 5.5 percent in December 2002. Pennsylvania's rate increased from a rate of 4.5 percent in December of 2001.

Source: Pennsylvania Department of Labor and Industry.

Unemployment Rate (Percent): United States and Pennsylvania  
December 2001 - December 2002 (Unadjusted)



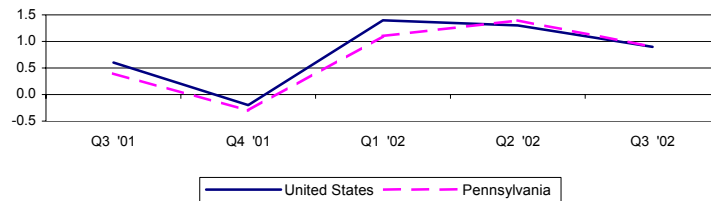
## Personal Income

Personal income increased 0.9 percent nationally in the third quarter of 2002 to \$8,984,227 million. Pennsylvania saw an increase of 0.9 percent to \$393,136 million. National per capita personal income stood at \$30,472 in 2001, a 2.4 percent rise from 2000. Pennsylvania, at \$30,720, showed a 3.4 percent increase and ranked 16<sup>th</sup> in the nation.

Source: U.S. Department of Commerce, Bureau of Economic Analysis.

Note: 3<sup>rd</sup> Quarter 2002 is the most current data available. 2001 most current for per capita.

Percent Change in Personal Income: United States and Pennsylvania,  
Third Quarter 2001 - Third Quarter 2002

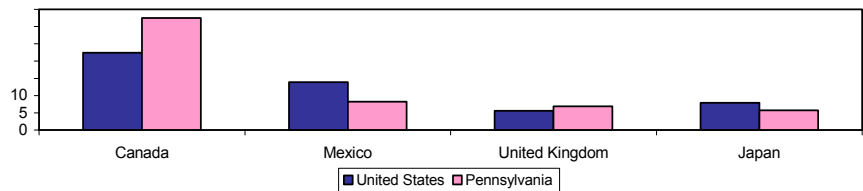


## Exports

In 2001, 16.9 percent of Pennsylvania's exports were computer and electronic products. Other top categories were non-electrical machinery (15.4 percent) and chemicals (13.9 percent). Pennsylvania ranked 11<sup>th</sup> in the nation in 2001, exporting 2.4 percent of the nation's total exports. Canada remained the top destination country for exports, receiving 22.4 percent of nation's total exports and 32.5 percent of Pennsylvania's total exports.

Source: U.S. Census Bureau, refined by Massachusetts Institute for Social and Economic Research (MISER).

Percent of Total Exports by Top Destination Countries: United States and Pennsylvania, 2001



For additional information, contact the Pennsylvania State Data Center.

Pennsylvania State Data Center  
Penn State Harrisburg  
777 West Harrisburg Pike  
Middletown, PA 17057-4898

Phone: 717.948.6336  
Fax: 717.948.6754  
Email: PaSDC-DATA@psu.edu  
URL: PaSDC.hbg.psu.edu