



Pennsylvania Economic Indicators

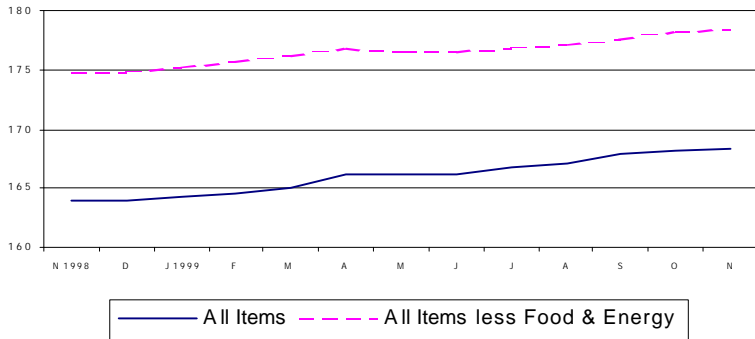
FOURTH QUARTER 1999

Consumer Price Index

The Consumer Price Index for All Urban Consumer (CPI-U) rose to 168.3 in November 1999 from 166.2 the previous month. This represents a 2.6 percent increase from November 1998. On a seasonally adjusted basis, the CPI-U rose by 0.1 percent in November 1999 after increasing 0.2 percent in October. Excluding food and energy, the CPI-U rose 0.05 percent in November, following a 0.3 percent rise in October.

Source: U.S. Department of Labor, Bureau of Labor Statistics.

Consumer Price Index: United States, November 1998 - November 1999



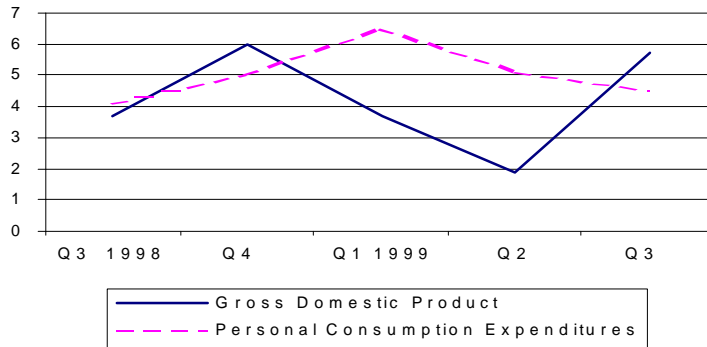
Gross Domestic Product

Real gross domestic product (GDP) increased at an annual rate of 5.7 percent in the third quarter of 1999, according to the national income and product accounts (NIPA's). Real personal consumption expenditures (PCE) increased 4.5 percent after increasing 5.1 percent in the second quarter 1999. Durable goods purchases increased 7.7 percent, compared to 9.1 percent in the second quarter. Nondurable goods increased 3.6 percent and services increased 5.0 percent.

Source: U.S. Department of Commerce, Bureau of Economic Analysis.

Note: 3rd Quarter 1999 is the most current data available.

Percent Change in Gross Domestic Product at Seasonally Adjusted Rates: United States, Third Quarter 1998 - Third Quarter 1999

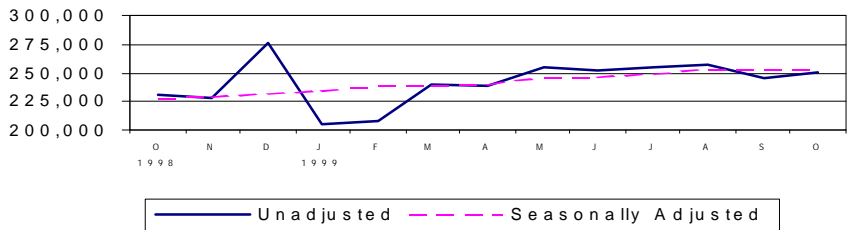


Retail Sales

Retail sales for October 1999 of \$256,823 million represent a 2.2 percent increase from September 1999 and a 6.9 percent increase from October 1998. On a seasonally adjusted basis, sales increased 0.3 percent from September 1999 and 8.9 percent from October 1998.

Source: U.S. Department of Commerce, Bureau of the Census.

Retail Sales - Millions of Current Dollars: United States, October 1998 - October 1999

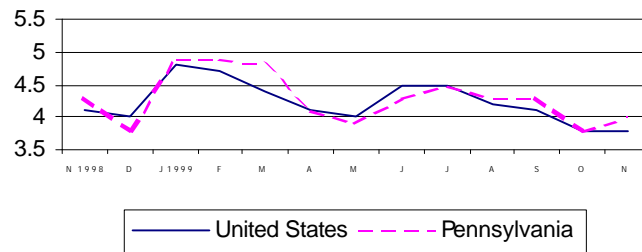


Unemployment Rate

The national unemployment rate remained constant at 3.8 in November 1999 from 3.8 in October. Pennsylvania's unemployment rate increased to 4.0 percent from October's 3.8. This represents a decrease from the November 1998 rate of 4.3 percent.

Source: Pennsylvania Department of Labor and Industry.

Unemployment Rate (Percent): United States and Pennsylvania, November 1998 - November 1999

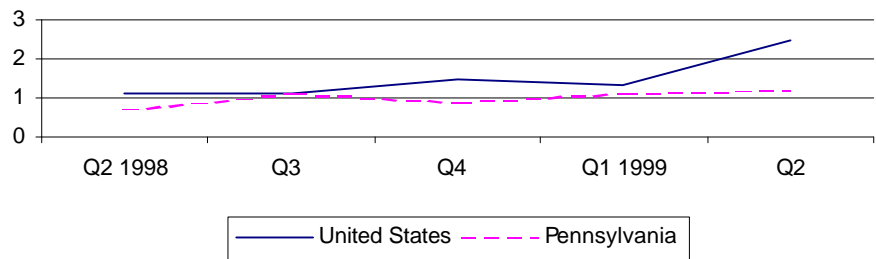


Personal Income

Personal Income rose 2.5 percent nationally in the second quarter of 1999 to \$7,492,8443 million. Pennsylvania also saw an increase of 1.2 percent to \$335,400 million. National per capita personal income stood at \$26,482 in 1998, a 4.7 percent rise from 1997. Pennsylvania, at \$26,889, also showed a 4.7 percent increase and ranked 16th in the nation.

Source: U.S. Department of Commerce, Bureau of Economic Analysis.

Percent Change in Personal Income: United States and Pennsylvania, Second Quarter 1998 - Second Quarter 1999

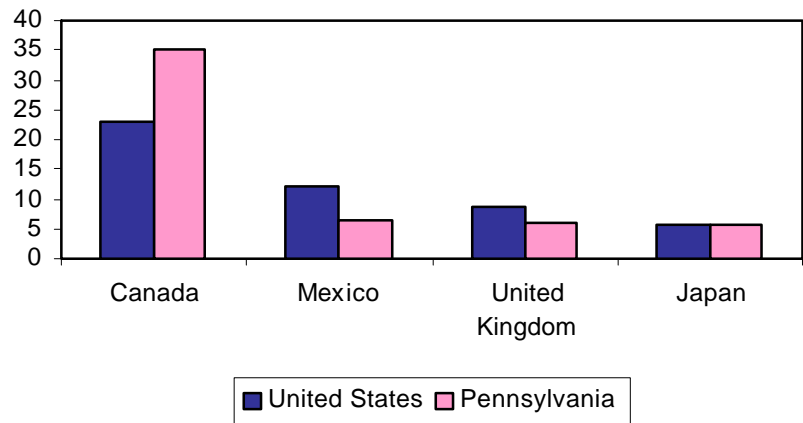


Exports

In 1998, 18 percent of Pennsylvania's exports were industrial machinery and computer equipment. Other top categories were electronics and electrical equipment (14 percent) and chemicals and allied products (13 percent). Transportation equipment was the nation's largest export at 19 percent. Canada remained the top destination country for exports receiving 23 percent of U.S. totals and 35 percent of Pennsylvania's.

Source: U.S. Census Bureau, refined by Massachusetts Institute for Social and Economic Research (MISER).

Percent of Total Exports by Top Destination Countries: United States and Pennsylvania, 1998



For more information, contact the Pennsylvania State Data Center.

Pennsylvania State Data Center
Penn State Harrisburg
777 West Harrisburg Pike
Middletown, PA 17-57-4898

Phone: (717) 948-6336
Fax: (717) 948-6754
Email: PaSDC-DATA@psu.edu
URL: psdc.hbg.psu.edu