



Pennsylvania Economic Indicators

4th Quarter 1998

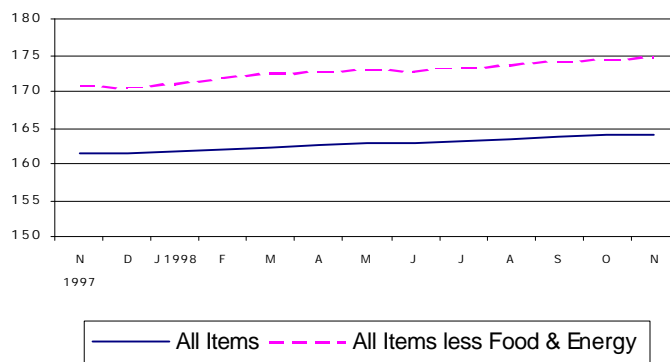
Prepared by: Pennsylvania State Data Center

Consumer Price Index (CPI-U)

The Consumer Price Index for All Urban Consumers (CPI-U) remained constant in November at 164.0. This represents a 1.5 percent increase from November 1997. On a seasonally adjusted basis, the CPI-U rose 0.2 percent in November after increasing 0.2 percent in October. Excluding food and energy, the CPI-U increased 0.05 percent in November, following a 0.29 percent rise in October.

Source: U.S. Department of Labor, Bureau of Labor Statistics.

US Consumer Price Index, CPI-U (1982-84=100)

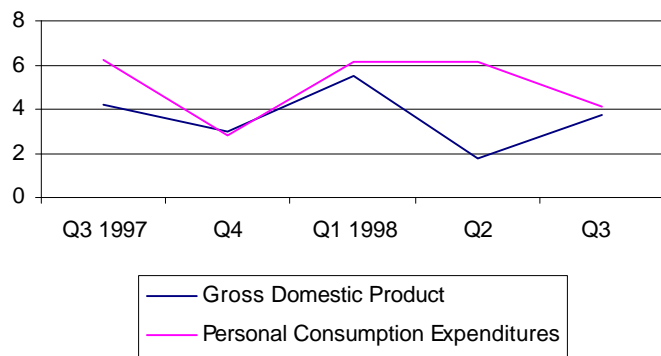


Gross Domestic Product

Real gross domestic product (GDP) increased at an annual rate of 3.7 percent in the third quarter of 1998, according to the national income and product accounts (NIPA's). Real personal consumption expenditures (PCE) increased 4.1 percent in the third quarter after increasing 6.1 percent in the second. Durable goods purchases increased 2.4 percent, compared to 11.2 percent in the second quarter. Nondurable goods increased 2.1 percent and services increased 5.4 percent.

Source: U.S. Department of Commerce, Bureau of Economic Analysis.

Percent Change at Seasonally Adjusted Rates

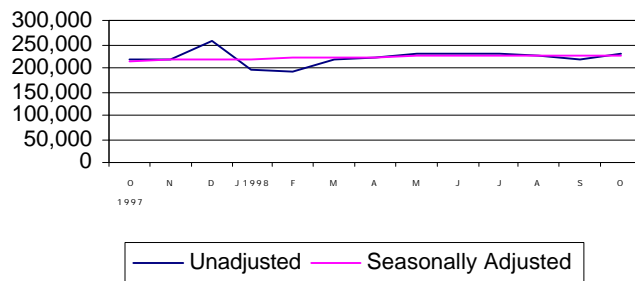


Retail Sales

Retail sales for October, \$230,679 million, represent a .59 percent increase from September and a 6.0 percent increase from October 1997. On a seasonally adjusted basis, sales increased 1.2 percent from September and 5.9 percent from October 1997.

Source: U.S. Department of Commerce, Bureau of the Census.

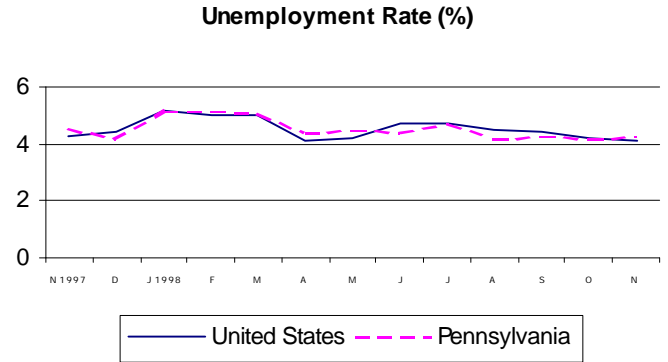
U.S. Retail Sales - Millions of Current Dollars



Unemployment Rate

The national unemployment rate decreased in November to 4.1 from 4.2 in October. Pennsylvania's unemployment rate increased to 4.3 percent from October's 4.2. This represents a decrease from the November 1997 rate of 4.6 percent.

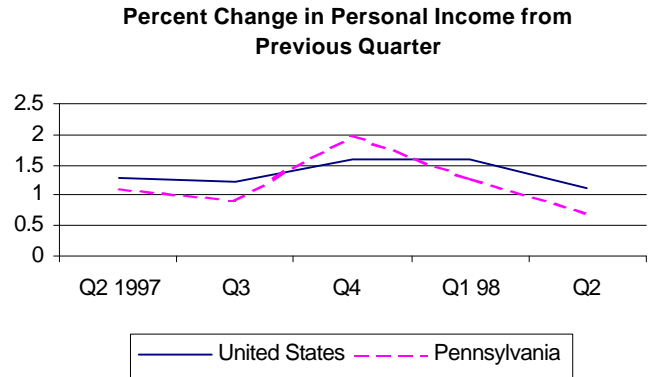
Source: U.S. Department of Labor, Bureau of Labor Statistics and Pennsylvania Department of Labor and Industry.



Personal Income

Personal Income rose 1.1 percent nationally in the second quarter of 1998 to \$7,070,608 million. Pennsylvania saw an increase of .7 percent to \$318,147 million. National per capita personal income stood at \$25,298 in 1997, a 4.7 percent change from 1996. Pennsylvania, at \$25,678, showed a 4.7 percent increase and ranked 17th.

Source: U.S. Department of Commerce, Bureau of Economic Analysis.

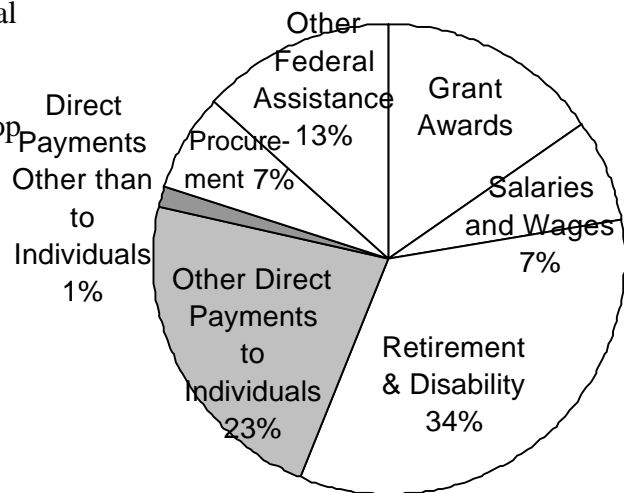


Federal Funding

Pennsylvania received more than \$76 billion in federal funds for fiscal year 1997. The largest percentage of Pennsylvania's federal funding, 34 percent, went toward retirement and disability payments. Other top categories consist of other direct payments to individuals (23 percent) and grant awards (15 percent).

Source: U.S. Census Bureau, Consolidated Federal Funds Report.

Distribution of Federal Funds to PA, 1997



For more information, contact the Pennsylvania State Data Center at (717) 948-6336 , fax (717) 948-6754 or by mail at: Pennsylvania State Data Center
777 West Harrisburg Pike
Middletown, PA 17057-4898