

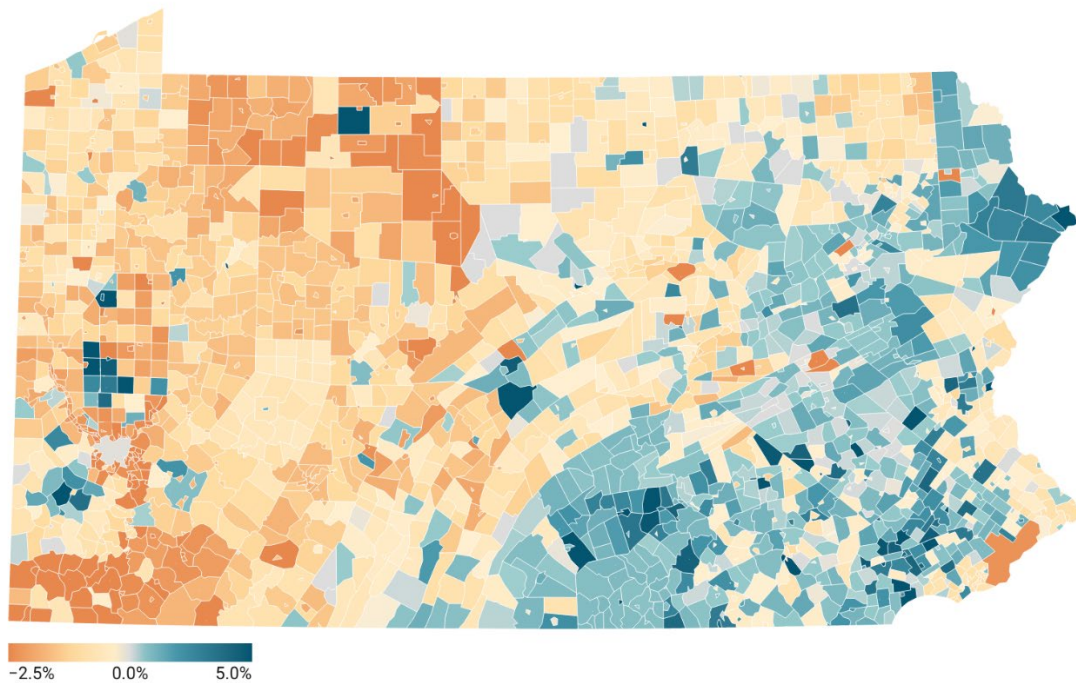
## 2022 Municipality Total Population Estimates Released

HARRISBURG – The U.S. Census Bureau released today 2022 estimates of the total population at the municipal level. Population estimates are calculated using administrative records to estimate total population as of July 1, 2022.

A total of 750 municipalities in Pennsylvania experienced an increase in population between the 2020 population estimate base (hereafter 2020) and the July 1, 2022 population estimate (hereafter 2022). A total of 77 municipalities were population neutral between 2020 and 2022 while 1,745 municipalities decline in total population.

### Percent Change in Pennsylvania Municipalities

Change from 2020 Estimates Base to July 1, 2022 Population Estimate



Map: PA State Data Center • Source: US Census Bureau • Created with Datawrapper

[Link to interactive map](#)

The tables below show the top five municipalities (with populations over 5,000 as of the 2020 Population Estimates Base) that experience the greatest increase or decrease in population based on numeric difference and percent change.

#### Municipalities that experienced the greatest numeric increase included:

Easton city	Northampton County	+2215 (+7.3%)
Carlisle borough	Cumberland County	+2090 (+9.4%)
Bethlehem city	Northampton County	+1826 (+3.2%)
Slippery Rock township	Butler County	+1562 (+18.9%)
Upper Macungie township	Lehigh County	+1502 (+5.4%)

**Municipalities that experienced the greatest percentage increase included:**

Slippery Rock township	Butler County	+18.9% (+1562)
Gettysburg borough	Adams County	+17% (+1455)
Millersville borough	Lancaster County	+14% (+1289)
Kennett township	Chester County	+9.8% (+903)
Carlisle borough	Cumberland County	+9.4% (+2090)

**Municipalities that experienced the greatest numeric decrease included:**

Philadelphia city	Philadelphia County	-36541 (-2.3%)
Erie city	Erie County	-1338 (-1.4%)
Penn Hills township	Allegheny County	-941 (-2.3%)
Altoona city	Blair County	-899 (-2.1%)
Mount Lebanon township	Allegheny County	-857 (-2.6%)

**Municipalities that experienced the greatest percentage decrease included:**

East Stroudsburg borough	Monroe County	-9.4% (-830)
Coal township	Northumberland County	-7.1% (-674)
Somerset township	Somerset County	-6.2% (-702)
Franklin township	Greene County	-5.8% (-388)
California borough	Washington County	-5.6% (-285)

**Source:** U.S. Census Bureau. Population Estimates Division. 2022 Vintage Sub-County Population Estimates.

**Notes:** All population change calculations were made against the 2020 Population Estimates Base. Counties having the same population in 2020 and 2022 may have had changes throughout the year, but the net effect of those populations was zero at the year end.

It is not appropriate to make comparisons across different vintage data sets. For example, the July 1, 2020 estimate in the 2022 vintage may differ from the July 1, 2020 estimate in the 2020 vintage. All comparisons and analyses should utilize a single vintage.

The Pennsylvania State Data Center is the commonwealth's official source for population and economic statistics. It is based at Penn State Harrisburg's Institute of State and Regional Affairs. The Pennsylvania State Data Center is part of the U.S. Census Bureau's National State Data Center Program.

Questions? Contact the Pennsylvania State Data Center at [pasdc@psu.edu](mailto:pasdc@psu.edu).