

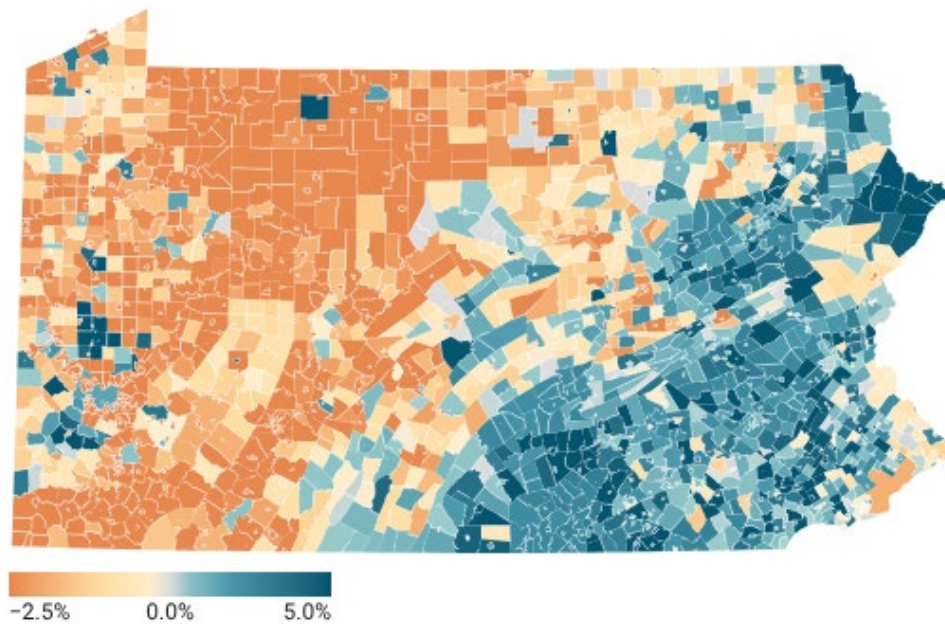
## 2025 Municipality Total Population Estimates Released

HARRISBURG – The U.S. Census Bureau released today 2025 estimates of the total population at the municipal level. Population estimates are calculated using administrative records to estimate total population as of July 1, 2025.

A total of 988 municipalities in Pennsylvania experienced an increase in population between the 2020 population estimate base (hereafter 2020) and the July 1, 2025 population estimate (hereafter 2025). A total of 43 municipalities were population neutral between 2020 and 2025 while 1,540 municipalities declined in total population.

### Percent Change in Pennsylvania Municipalities

Change from 2020 Estimates Base to July 1, 2025 Population Estimate



Map: PA State Data Center • Source: US Census Bureau • Created with Datawrapper

[Link to interactive map](#)

The tables below show the top five municipalities (with populations over 2,500 as of the 2020 Population Estimates Base) that experienced the greatest increase or decrease in population based on numeric difference and percent change.

**Municipalities that experienced the greatest numeric increase included:**

Pittsburgh city	Allegheny County	+4,578	(+1.5%)
Bethlehem city	Northampton County	+3,358	(+6.0%)
Upper Macungie township	Lehigh County	+3,237	(+12.3%)
Upper Merion township	Montgomery County	+3,072	(+9.1%)
Hampden township	Cumberland County	+2,645	(+8.1%)

**Municipalities that experienced the greatest percentage increase included:**

Lancaster township	Butler County	+36.1%	(+990)
Westfall township	Pike County	+34.8%	(+883)
Jackson township	Butler County	+34.7%	(+1,696)
Wind Gap borough	Northampton County	+28.7%	(+809)
Slippery Rock township	Butler County	+24.7%	(+1,652)

**Municipalities that experienced the greatest numeric decrease included:**

Philadelphia city	Philadelphia County	-29,519	(-1.8%)
Erie city	Erie County	-3,167	(-3.3%)
Altoona city	Blair County	-1,603	(-3.6%)
Penn Hills municipality	Allegheny County	-1,566	(-3.8%)
Bethel Park municipality	Allegheny County	-1,523	(-4.5%)

**Municipalities that experienced the greatest percentage decrease included:**

California borough	Washington County	-14.0%	(-754)
Smithfield township	Huntingdon County	-13.9%	(-642)
Gregg township	Union County	-12.2%	(-501)
Waynesburg borough	Greene County	-9.2%	(-369)
Decatur township	Clearfield County	-8.9%	(-405)

**Source:** U.S. Census Bureau. Population Estimates Division. 2025 Vintage Sub-County Population Estimates.

**Notes:** All population change calculations were made against the 2020 Population Estimates Base. Municipalities having the same population in 2020 and 2025 may have had changes throughout the year, but the net effect of those populations was zero at the year end.

It is not appropriate to make comparisons across different vintage data sets. For example, the July 1, 2020 estimate in the 2025 vintage may differ from the July 1, 2020 estimate in the 2020 vintage. All comparisons and analyses should utilize a single vintage.

The Pennsylvania State Data Center is the commonwealth's official source for population and economic statistics. It is based at Penn State Harrisburg's Institute of State and Regional Affairs. The Pennsylvania State Data Center is part of the U.S. Census Bureau's National State Data Center Program.

Questions? Contact the Pennsylvania State Data Center at [pasdc@psu.edu](mailto:pasdc@psu.edu).